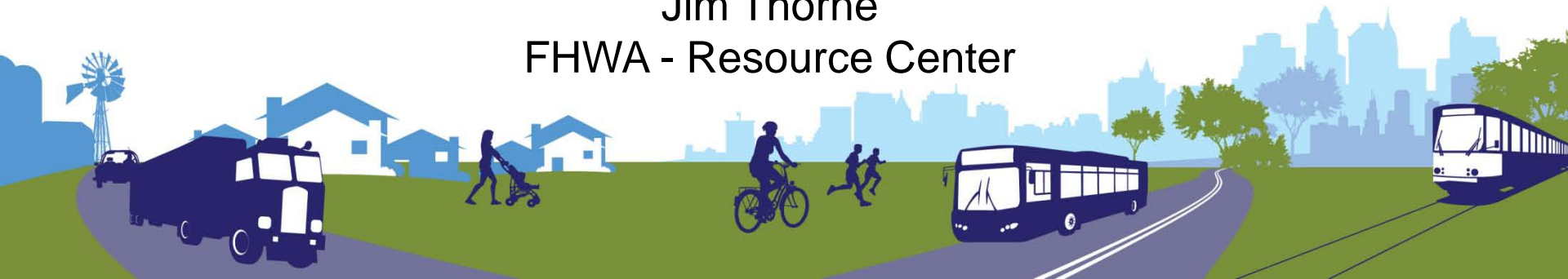


Federal Highway Administration's Livability Initiative

Conference on Performance Measures for
Transportation and Livable Communities

September 7, 2011
Austin, Texas

Jim Thorne
FHWA - Resource Center



Sustainable Communities Partnership



- Improve access to affordable housing, provide more transportation options and lower transportation costs while protecting the environment.
- Encourages livability principles to be incorporated into federal programs and funding.
- Achieve our economic, social, and environmental goals most effectively when we work on them together.

Partnership Livability Principles



Transportation Choices



Equitable, Affordable Housing



Economic Competitiveness



Support Existing Communities



Align Federal Policies



Value Communities

What does this mean for transportation agencies?



It's about considering all transportation modes and affordability



It's about serving people of all ages, incomes, races, and ethnicities



It's about improving access to work, services, and markets



It's about making government more efficient



It's about responding to community vision and values

Transportation Planning Factors

- a) Support **economic vitality**
- b) Increase **safety**
- c) Increase **security**
- d) Increase **accessibility** and **mobility**
- e) Protect and enhance the **environment**
- f) Enhance **connectivity** across and between **modes**
- g) Promote efficient **system management** and **operation**
- h) **Preserve** the existing transportation system



Transportation Planning Factors

(e) protect and enhance the environment, promote energy conservation, improve the quality of life, and promote consistency between transportation improvements and State and local planned growth and economic development patterns;

Livability in Transportation

Using the quality, location and type of transportation facilities and services to help achieve broader community goals such as access to good jobs, affordable housing, quality schools, and safe streets

Livability, sustainability, smart growth,
walkable communities, new urbanism,
healthy neighborhoods, active living, transit
oriented development, complete streets,
Sustainawalkabilism . . .

Livability in the Planning Process

- Public and decision maker understanding that land use and transportation are intertwined.
- Help region develop vision related to community growth and values.
- Goals, performance measures, policies that address livability, quality of life, . . .
- Land use and transportation integration.



More Livability in the Planning Process

- Active public involvement.
- Multi-modal planning.
- Interdisciplinary efforts.
- Safe, connected, multimodal roadway networks.
- CSS in regional, corridor, project planning.
- Plans, programs and projects support broader community goals.
- Options and approaches vary.



FHWA's Efforts to Advance Livability

- Livability Website
- Livability in Transportation Guidebook
- Role of FHWA Programs in Livability Report
- 5 Regional workshops
- NADO Peer Exchanges on Rural Livability
- Environmental Justice in Transportation: Emerging Trends and Best Practices Guidebook
- Sustainable Communities Division Office Network



FHWA Livability Web Site

www.fhwa.dot.gov/livability

Livability Initiative



[Livability Home](#) | [Contacts Map](#) | [FAQs](#) | [Related Links](#)

FHWA

Livability Activities

[Case Studies](#)

[Partnership](#)

[Programs](#)

[Resources](#)

Contacts

FHWA Office of Planning
Contacts

[Fred Bowers](#)
(202-366-2374)

[Shana Baker](#)
(202-366-4649)

Livability Initiative

A Few Words from Victor Mendez, Federal Highway Administrator

Welcome to the Federal Highway Administration's (FHWA) Livable Communities webpage. This webpage is intended to provide information on the FHWA Livability Initiative as well as provide updates on the DOT/HUD/EPA Partnership for Sustainable Communities.

I am honored to be a part of the most exciting time in the history of American highways. I will work to continue improving the relationship between infrastructure and community needs, specifically to improve a community's 'livability,' to enhance the environmental sensitivity of roads and bridges and to help states explore multi-modal transportation options. There is much work ahead of us, but I look forward to it. Our mission is to bring you the highway system you deserve, and I welcome the challenge.

Victor Mendez, Federal Highway Administrator



What is Livability?

- Livability is defined as providing transportation choices that promote place-based transportation policies that are centered on people. A livable community is one in which people have multiple, convenient transportation and housing options as well as destinations easily accessible to people traveling in and out of cars. Livable communities also encourage mixed-use, multi modal neighborhoods with highly-connected streets promoting mobility for all users. Livability is about planning and designing transportation projects that preserve and enrich the unique character of rural, urban, and suburban communities.

Highlights

HUD/DOT/EPA [Interagency Partnership](#) for Sustainable Communities.

The Partnership will focus on the following areas for this year:

- Respond to recommendations made by Stakeholders
- Align funding in regards to HUD's NOFA and DOT's NOFA
- Build regional capacity and collaboration between agency field offices
- Make visible progress coordinating federal planning requirements for housing, transportation, air quality, and water infrastructure.
- EPA's [Smart Growth Implementation Assistance Projects](#).

[More...](#)

This page last modified on 03/29/10

[FHWA Home](#) | [Feedback](#) | [Privacy Notice](#)



partnership for Sustainable Communities

an interagency partnership HUD • DOT • EPA



Home About Us In Your Community Grants Resources Get Involved

Google Search

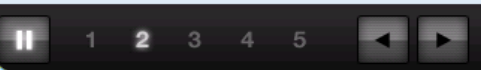


A Year of Progress for American Communities

Report on the first year of the Partnership for Sustainable Communities.

[Read More](#)

A YEAR OF PROGRESS FOR AMERICAN COMMUNITIES



By working together, [HUD, DOT, and EPA] can make sure that when it comes to development—housing, transportation, energy efficiency—these things aren't mutually exclusive; they go hand in hand. And that means making sure that affordable housing exists in close proximity to jobs and transportation. That means encouraging shorter travel times and lower travel costs. It means safer, greener, more livable communities.



—President Barack Obama

Sustainable Communities

Sustainable communities are places that have a variety of housing and transportation choices, with destinations close to home. As a result, they tend to have lower transportation costs, reduce air pollution and stormwater runoff, decrease infrastructure costs, preserve historic properties and sensitive lands, save people time in traffic, be more economically resilient and meet market demand for different types of housing at different price points. Rural, suburban, and urban communities can all use sustainable communities strategies and techniques to invest in healthy, safe and walkable neighborhoods, but these strategies will look different in each place depending on the community's character, context, and needs.

Developing more sustainable communities is important to our national goals of strengthening our economy, creating good jobs now while providing a foundation for lasting prosperity, using energy more efficiently to secure energy independence, and protecting our natural environment and human health. Three federal agencies came together to create the Partnership for Sustainable Communities to help places around the country develop in more environmentally and economically sustainable ways. To guide its work, the Partnership developed [six livability principles](#):



White House Discussion with HUD, DOT, and EPA Representatives

—July 15, 2010

[Links to Partnership Agencies](#)

Livability in Transportation Guidebook

Planning Approaches that Promote Livability



Executive Summary

Introduction

Project Highlights

Visioning

Planning and Process

Policy

Partnership

Design

**Implementation and
Funding**

Conclusion

Livability in Transportation Guidebook

Series of urban and rural case studies and strategies that facilitate:

- Revitalizing rural small towns
- Better connecting downtowns with neighborhoods
- Completing street networks
- Supporting compact, mixed use development
- Maximizing efficiency of existing transportation infrastructure
- Mitigating impacts of climate change
- Preserving natural and cultural resources

True Affordability and Location Efficiency

H+T Affordability Index



Livability Principles Addressed by Primary Case Studies

	Increase Transportation Choices	Promote Affordable Housing	Enhance Economic Competitiveness	Support Existing Communities	Coordinate Federal Policies & Leverage Funding	Value Existing Communities
Albany, NY—CDTC New Visions Transportation Plan	○	○	○	●	●	●
Atlanta, GA—Livable Centers Initiative	○	○	○	●	●	●
Cathedral City, CA—Palm Canyon Drive Streetscape	●		●	●		●
Charlotte, NC—Integrated Land Use and Transit Planning	●	○	●	●	○	●
Chattanooga, TN —Riverfront Parkway Transportation and Urban Design Plan	●		●	●		●
Denver, CO—FasTracks	●		●	●	○	●
Eugene, OR—Emerald Express Green Line Bus Rapid Transit	●		○	●	○	○
Fargo, ND—Downtown Redevelopment	○	○	●	●	○	●
Loudoun County, VA—Route 50 Rural Traffic Calming	●			●		●
Maine—Gateway Route 1	●	○		●		●
MD—MDOT Transit-Oriented Development Initiative	●	●		●		○
PA—PennDOT Smart Transportation Program	●		●	●	○	●
Raleigh, NC—Hillsborough Street Improvement Project	●		●	●		●
VA/MD—Woodrow Wilson Bridge	●	○			○	
National—Housing + Transportation Affordability Index	○	●		●		●

The Role of FHWA Programs In Livability: State of the Practice Summary

Highlights implementation of livability principles within the context of the Federal-aid highway program

- Highway Projects and Programs
- Safety Projects and Programs
- Bicycle and Pedestrian Programs
- Management and Operations
- Freight Projects and Programs



Strategies for Implementing Livability

- Multimodal Corridors and System Planning
- Programmatic Support and Technical Assistance

Processes, Performance Measures and Tools

FHWA Land Use Tool Kit

www.fhwa.dot.gov/planning/landuse/



Tool Kit for Integrated

Introduction

Welcome! The objective of the procedures for integrating land use into transportation planning in this kit is designed:

- To assist metropolitan areas, state agencies, and other organizations in integrating land use considerations into transportation planning;
- As a resource for local agencies that wish to better understand the relationship between land use and transportation.

The tool kit is made up of the following:

- **The Tools** which include additional information and resources;
- **Case Studies** provide examples of best practice; and
- **Other References** include publications and web sites used in decision-making.
 - [Publications](#)
 - [Web Sites](#)

PREPARED FOR THE FEDERAL HIGHWAY ADMINISTRATION



A RESIDENT'S GUIDE FOR CREATING SAFE AND WALKABLE COMMUNITIES

Purpose

The United States Department of Transportation (DOT) is providing this Policy Statement to reflect the Department's support for the development of fully integrated active transportation networks. The establishment of well-connected walking and bicycling networks is an important component for livable communities, and their design should be a part of Federal-aid project developments. Walking and bicycling foster safer, more livable, family-friendly communities; promote physical activity and health; and reduce vehicle emissions and fuel use. Legislation and regulations exist that require inclusion of bicycle and pedestrian policies and projects into transportation planning.

Transportation Planning for Sustainability Guidebook

Prepared for the U.S. DOT Federal Highway Administration



FHWA Scenario Planning Guidebook

September 2010

Prepared for:
Office of Planning
Federal Highway Administration
U.S. Department of Transportation

Prepared by:
Transportation Policy, Planning and Organizational Excellence Division
John A. Volpe National Transportation Systems Center
Research and Innovative Technology Administration
U.S. Department of Transportation



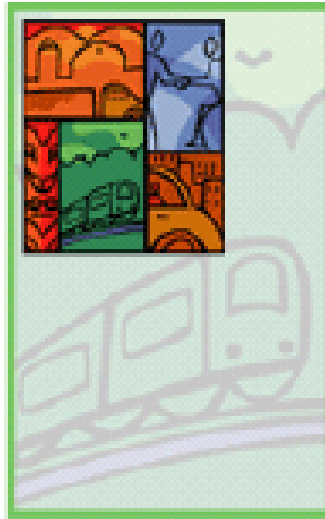
UNITED STATES
DEPARTMENT OF TRANSPORTATION

U.S. Department of Transportation

United States Department of Transportation Policy Statement on Bicycle and Pedestrian Accommodation Regulations and Recommendations

Signed on March 11, 2010 and announced March 15, 2010





Peer Exchanges

Planning for a Better Tomorrow

FHWA/FTA
Transportation Planning Capacity Building

Transportation Planning Capacity Building Program

– Peer Exchange Report –

**“Effective Practices in Planning for Livable Communities
at Metropolitan Planning Organizations (MPOs)”**

Peer Exchange Discussion Topics

- Transportation and Land Use Integration
- Transportation Planning Process
- Programming and Project Prioritization
- Funding
- Project Implementation
- Program Evaluation and Performance Measures
- Partnerships and Outreach

One of the key benefits of creating an MPO Livability Program is that it creates a forum for establishing closer working relationships with local planning board officials and planning agency staff.



FHWA's Efforts to Advance Livability

- Livability in Transportation Webinars
- Creating Livable Communities Report
- Livability Fact Sheets
- Role of M&O in Supporting Livability and Sustainability: A Primer
- Integrating Demand Management into the Transportation Planning Process Desk Reference
- Livability Performance Measures
- Sustainable Highways Tool

In the Works:



New FHWA Publication:

Role of M&O Strategies in Supporting Livability and Sustainability

M&O strategies can help improve how existing transportation systems interface with the communities they serve.

- Traffic incident management
- Traffic signal coordination
- Transit signal priority / bus rapid transit
- Freight management
- Work zone management
- Special event management
- Road weather management
- Congestion pricing
- Managed lanes
- Ridesharing programs / demand management programs
- Parking management
- Electronic toll collection / transit smartcards
- Traveler information

plan4operations.dot.gov



Livability Performance Measures Project

- Develop and define performance measures appropriate to creating, developing and enhancing livable communities.
- Make adoption and tracking of livability performance measures easier by distilling current practice, knowledge and research into a resource that will guide users through the process.
- Produce handbook to help transportation agencies incorporate performance measures related to livability.

Next Steps for Methods for Gauging Livability

- Research the literature and best practices on measuring Livability
 - Interview Academic Community, State DOTs, MPOs
 - Rural, suburban, urban
- Develop draft livability performance measures handbook
- Convene expert panel peer exchange to assess the proposed performance measures
- Conduct a beta test to engage broader cross section of practitioners in effort.
- Create electronic “how to book”
- Outreach workshops

Sustainable Highways Tool

- Self-evaluation tool to measure sustainability over the life cycle of a transportation project
- Collection of best practices
- Web-based
- Based on triple bottom line
 - Environmental
 - Economic
 - Social
- Pilot Test Version

U.S. Department of Transportation
Federal Highway Administration

Search | Feedback

Federal Highway Administration, U.S. Department of Transportation
Sustainable Highways Self-Evaluation Tool

Pilot Test
Login
Register

Home | Learn | Browse | Score

search

Home
Learn
Browse
Score
FAQ
Provide
Comments
Privacy
Register

Welcome!

Pilot Test Version of the FHWA Sustainable Highways Self-Evaluation Tool

This website represents a significant revision of the FHWA Beta tool released in the Fall of 2010. We received many valuable stakeholder comments on the Beta tool, and have made some significant changes to improve the tool and to address many of the comments. A few of the major modifications:

- Focuses on the evaluation of specific projects through the Project Development (PD) credits. The System Planning and Operations and Maintenance credits will be revised and released later.
- Greatly simplifies credits and scoring. The credit explanations have been simplified and many credits have been eliminated or combined with others.
- Makes scoring smaller projects easier. We have created a "basic" version of the tool that includes credits that would be more appropriate for preservation, restoration, and small reconstruction projects.

What do you want to do?

Learn ▶
A guided tour through this website to learn about sustainable highways and integrating sustainability best practices into Project Development.

Browse ▶
A gateway to browse the complete set of credits that can be used to evaluate sustainability in project development.

www.sustainablehighways.org





FHWA Livability Contacts:

- Livability Team, Office of Human Environment
Gabe Rousseau, Shana Baker, Sharlene Reed
- FHWA Division Office Sustainable Communities Contacts
FHWA Livability Website: fhwa.dot.gov/livability
- FHWA Resource Center
Planning Technical Service Team, Jim Thorne
Environment Technical Service Team, Rod Vaughn