

Some Concluding Thoughts

Christopher Forinash
EPA Office of Sustainable Communities

Conference on Performance Measures for
Transportation and Livable Communities

Austin, Texas – 8 September 2011



Presentation Roadmap

1. Call to arms
2. General themes
3. Local and regional leadership
4. National work supports
5. Research challenges



General Themes

1. Sustainability and livability matter to public



Public Support for Sustainable Communities

National opinion survey from 2011:

- Majority of Americans – regardless of political affiliation- support sustainable communities (79% overall)
- Majority of Americans believe their region needs more sustainable communities (66% overall)
- Most Americans believe that sustainable communities are an important part of rebuilding the national economy (80% overall)

The poll also found overwhelming public support for the Partnership's core principles.



Source: "Building for the 21st Century: American support for sustainable communities", March 2011.
<http://www.smartgrowthamerica.org/documents/building-for-the-21st-century.pdf>

General Themes

1. Sustainability and livability matter to public
2. Transportation is a public service - performance measures operationalize this
3. Still confusion over livability, sustainability?



Partnership Livability Principles



**Provide More
Transportation Choices**



**Promote Equitable
Affordable Housing**



**Enhance Economic
Competitiveness**



**Support Existing
Communities**



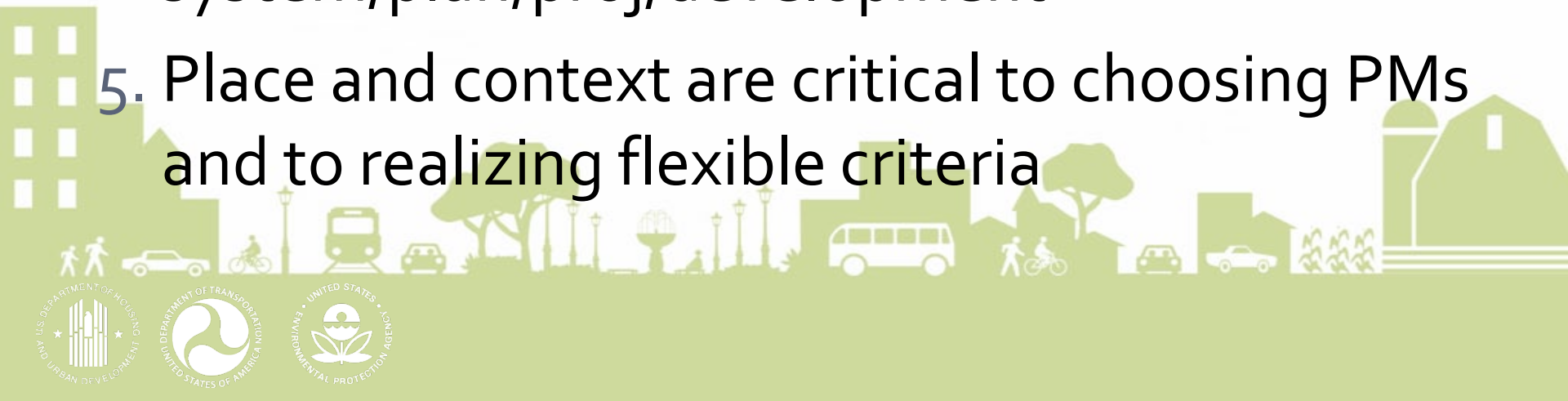
**Coordinate Policies and
Leverage Investments**



**Value Communities and
Neighborhoods**

General Themes

1. Sustainability and livability matter to public
2. Transportation is a public service - performance measures operationalize this
3. Still confusion over livability, sustainability?
4. Definitely confusion over PMs - program vs system/plan/proj/development
5. Place and context are critical to choosing PMs and to realizing flexible criteria



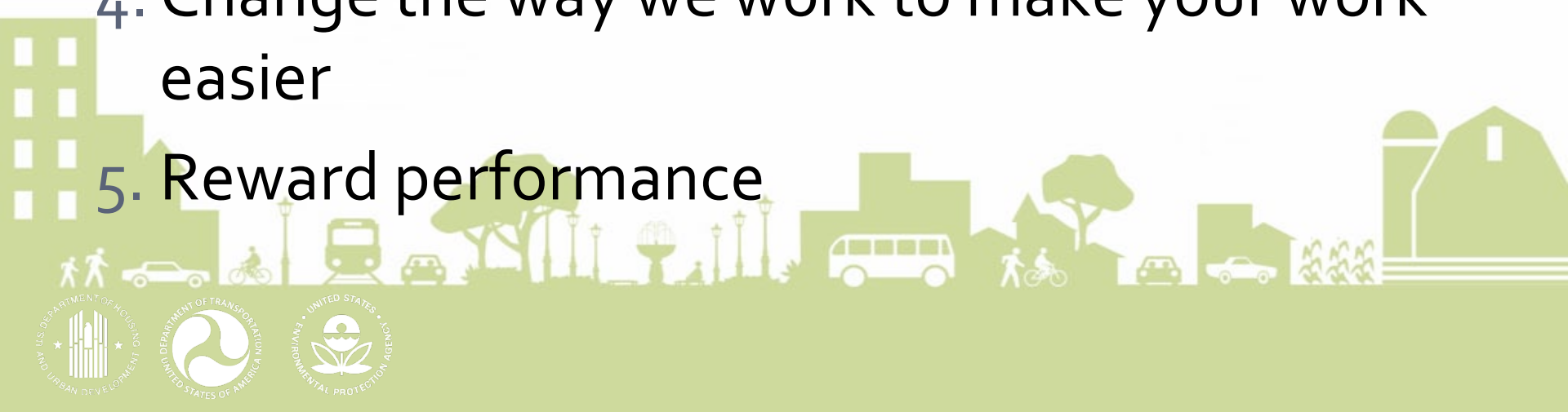
Local and Regional Leadership

1. Local innovation has created great examples
2. Specific goals & measures emerge from local priorities
3. Measure even if you can't control or get credit
4. Power of scenario planning
5. Process is critically important to success



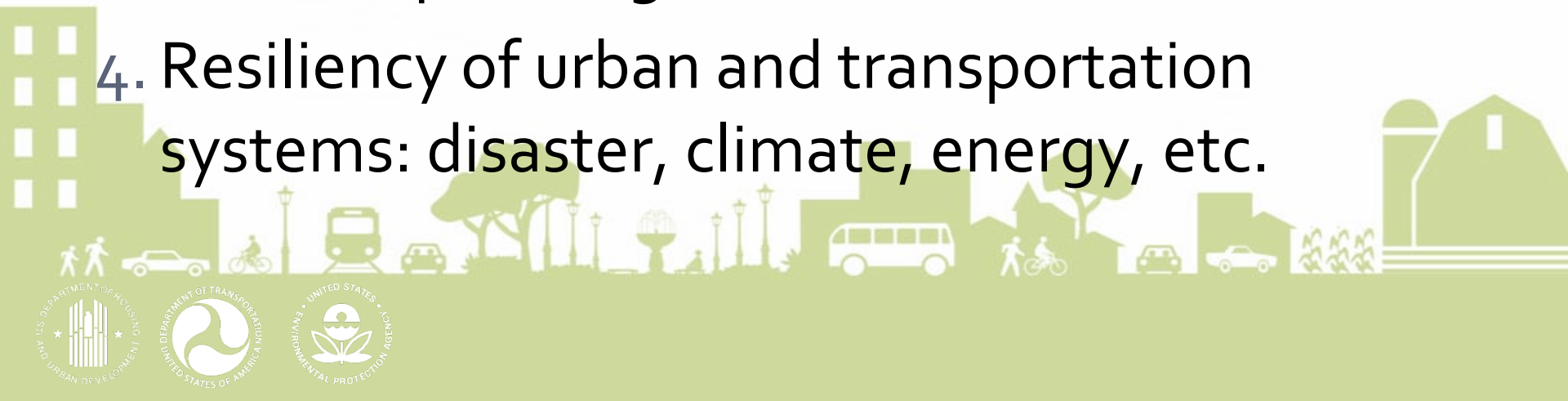
National Work Supports

1. Partnership for Sustainable Communities
2. Seeking to support and highlight best practices (\$)
3. Build data back-end
4. Change the way we work to make your work easier
5. Reward performance



Research Challenges

1. Fiscal & economic impacts
2. Include other transportation impacts: emergency response, schools, health, etc.
3. Quick-response methods to integrate with scenario planning
4. Resiliency of urban and transportation systems: disaster, climate, energy, etc.



Thank you

Christopher Forinash

US EPA Office of Sustainable Communities

forinash.christopher@epa.gov

202.566.0518

epa.gov/smartgrowth

sustainablecommunities.gov

