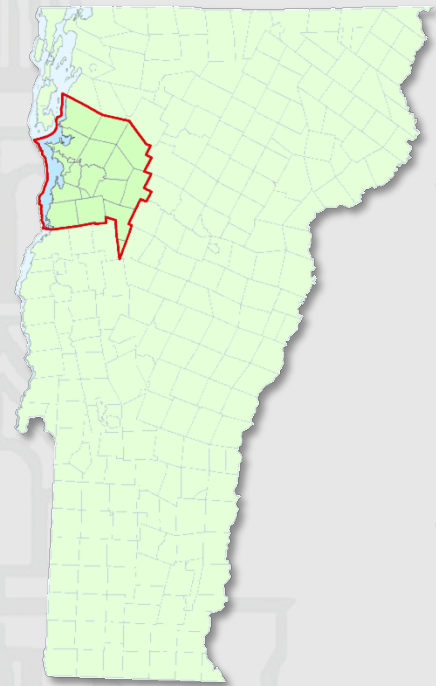


# Measuring Livability in Small Urban and Rural Communities with Disaggregate Data

## A Case Study of Chittenden County, Vermont



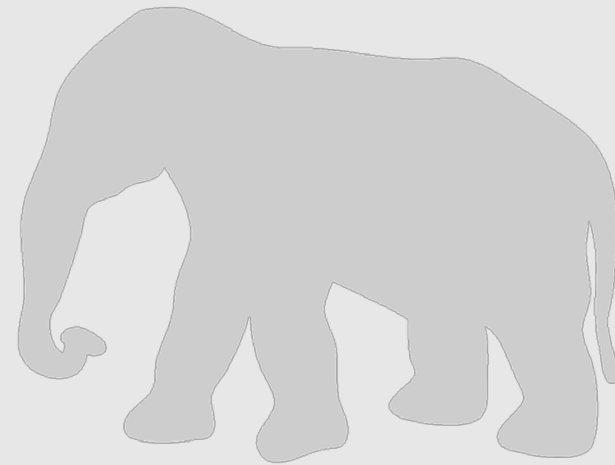
NATHAN P. BELZ, M.S., E.I.  
*University of Vermont, Transportation Research Center*  
Burlington, VT 05405-1757  
Phone: (802) 656-5539  
Email: [nathan.belz@uvm.edu](mailto:nathan.belz@uvm.edu)

LANCE A. JENNINGS  
*University of Vermont, Transportation Research Center*  
Burlington, VT 05405-1757  
Phone: (802) 656-5538  
Email: [lance.jennings@uvm.edu](mailto:lance.jennings@uvm.edu)



How do we deal with **what to include** versus **what data are available** and how to appropriately **“combine”** that data?

(Elephant in the room... )

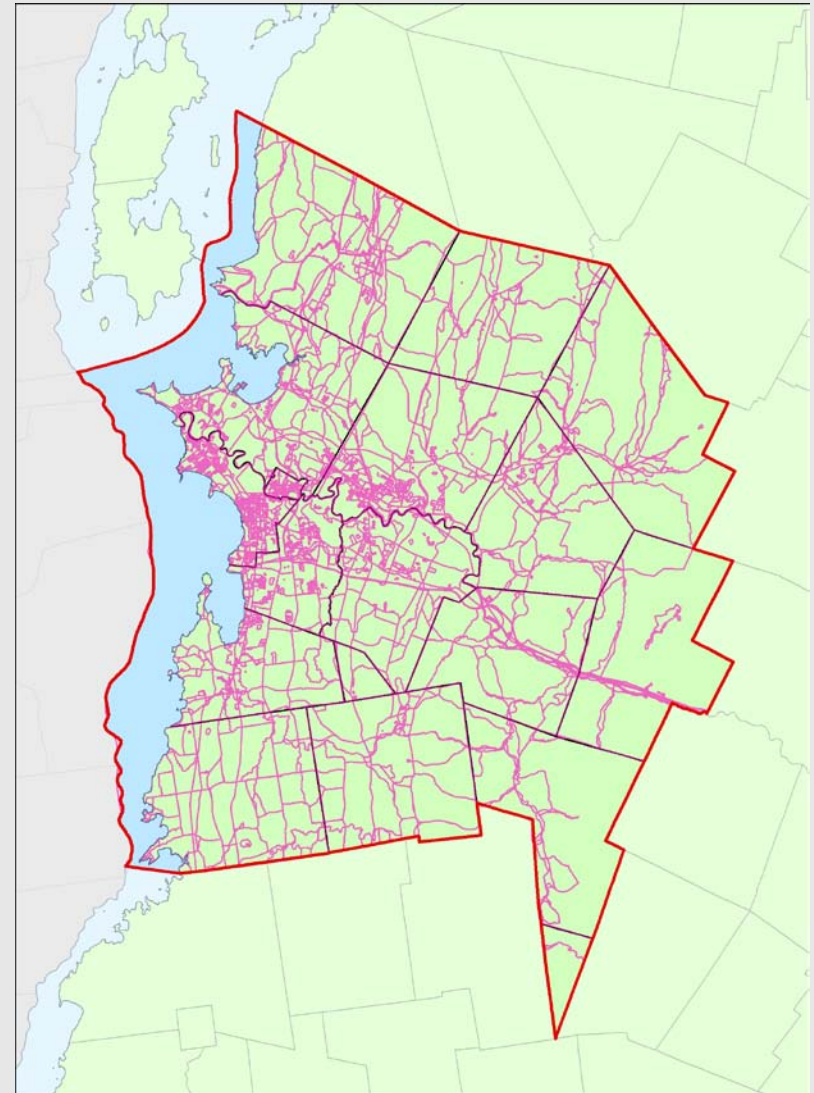


## Importance of Geographic Scale

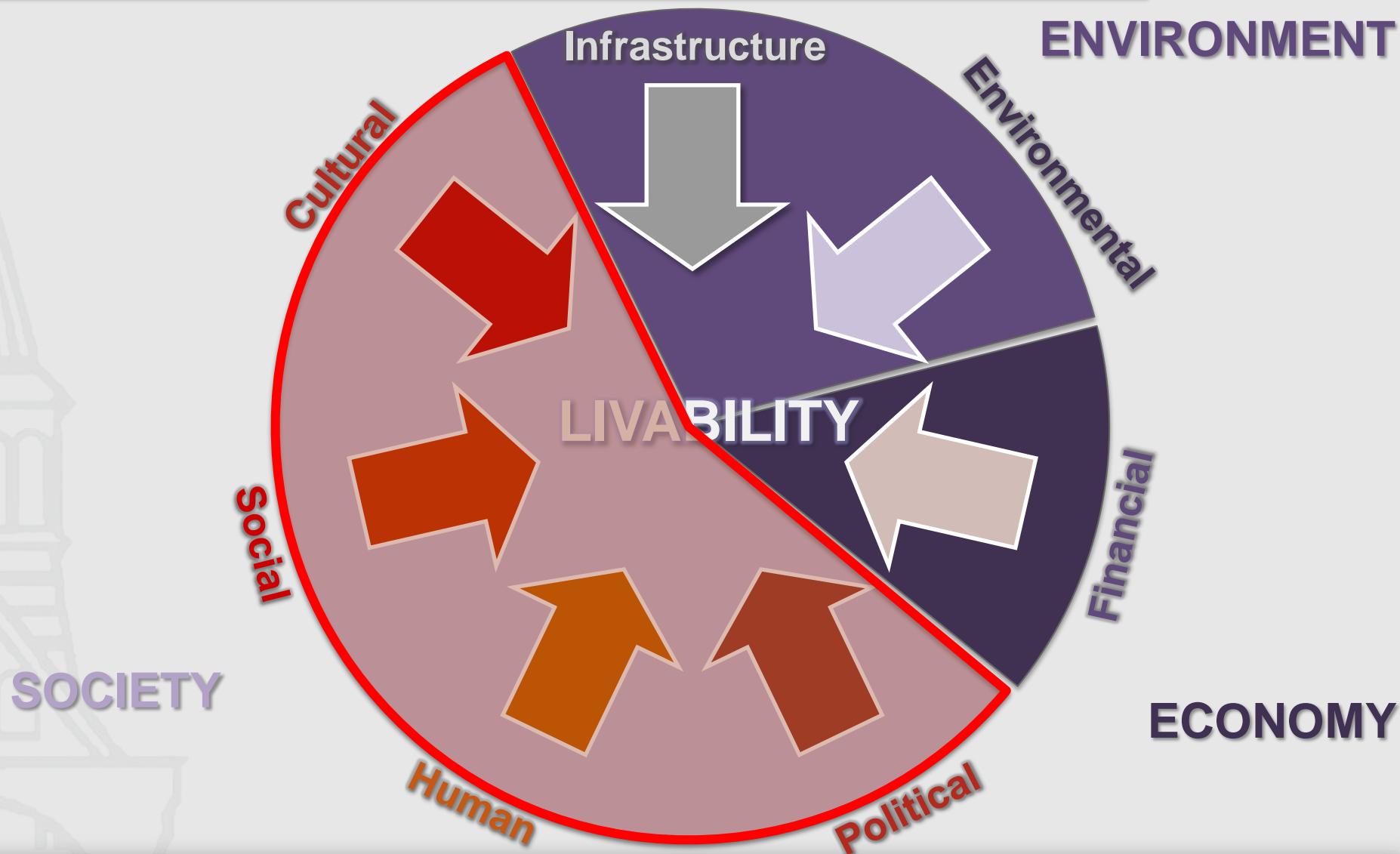
1. Boundaries
2. Units

**Aggregate scale induces unequal representation**

**i.e. towns, block groups, blocks**



## Seven Capitals for Livable Communities



### 1. Infrastructure (built capital)

- a. Sidewalks
- b. Roads
- c. Buildings
- d. Land use and land cover

### 2. Environmental

- a. Land cover
- b. Parks and recreation
- c. Green space
- d. Nature trails, bike trails, shared-use paths
- e. Conservation organizations
- f. Ecosystems (water quality, fragile habitats, etc.)



### 3. Political

- a. Voting districts, voting turnout
- b. Satisfaction with elected officials
- c. Allocation and utilization of funds

### 4. Financial

- a. Tax revenue/budget
- b. Household income
- c. Property value
- d. Businesses, jobs, employment
- e. Amount of sales



### 5. Human

- a. Schools and education
- b. Job training centers
- c. Mortality rates, median age, BMI, “health indicators”
- d. “Top Ten” lists

### 6. Social

- a. Connectedness, trust, “knowing your neighbor”
- b. Supplementation by “electronic social networks”
- c. Utilization of park and rides
- d. Community events



### 5. Cultural

- a. Churches
- b. Race and ethnicity (diversity  $\neq$  livability)
- c. Proximity of generations with a family
- d. Transfer of knowledge
- e. Events/fairs/parades
- f. Celebrating the history of a town (preservation, historical register, etc.)
- g. Designated “villages” and “downtowns”





## "TEN BEST"

**CNN Best Places to Live<sup>1</sup>***America's Best Small Towns*

- 1 Louisville, CO
- 2 Milton, MA
- 3 Solon, OH
- 4 Leesburg, VA
- 5 Papillion, NE
- 6 Hanover, NH
- 7 Liberty, MO
- 8 Middleton, WI
- 9 Mukilteo, WA
- 10 Chanhassen, MN

**RelocateAmerica.com<sup>2</sup>***Top Overall Places to Live*

- 1 Austin, TX
- 2 Grand Rapids, MI
- 3 Boulder, CO
- 4 Raleigh, NC
- 5 Dallas, TX
- 6 Greenville, SC
- 7 Augusta, GA
- 8 Boise, ID
- 9 Omaha, NE
- 10 Oklahoma City, OK

<sup>1</sup>(<http://money.cnn.com/magazines/moneymag/bplive/2011/>)

<sup>2</sup>(<http://www.relocateamerica.com/top-100-cities/>)



## "TEN BEST"

**Parenting.com<sup>3</sup>***Best Cities for Families*

- 1 Washington, DC
- 2 Austin, TX
- 3 Boston, MA
- 4 Minneapolis, MN
- 5 Des Moines, IA
- 6 Madison, WI
- 7 Honolulu, HI
- 8 Omaha, NE
- 9 Seattle, WA
- 10 Louisville, KY

**Sperling's Best Places<sup>4</sup>***Best Cities to Relocate to*

- 1 Charlottesville, VA
- 2 Santa Fe, NM
- 3 San Luis Obispo, CA
- 4 Santa Barbara, CA
- 5 Honolulu, HI
- 6 Ann Arbor, MI
- 7 Atlanta, GA
- 8 Asheville, NC
- 9 Reno, NV
- 10 Corvallis, OR

<sup>3</sup> (<http://www.parenting.com/article/2011-best-cities-to-live>)

<sup>4</sup> (<http://www.bestplaces.net/docs/studies/bestplaces05.aspx>)



## “TEN BEST”

**Men's Health<sup>5</sup>***Best Cities for Men*

- 1 Madison, WI
- 2 Fargo, ND
- 3 Plano, TX
- 4 Burlington, VT
- 5 San Jose, CA
- 6 Lincoln, NE
- 7 Austin, TX
- 8 Aurora, CO
- 9 Virginia Beach, VA
- 10 Seattle, WA

**EIU Liveability Ranking<sup>6</sup>***Liveability Report for the US*

- 1 Pittsburgh, PA
- 2 Honolulu, HI
- 3 Washington, D.C.
- 4 Chicago, IL
- 5 Atlanta, GA
- 6 Miami, FL
- 7 Detroit, MI
- 8 Boston, MA
- 9 Seattle, WA
- 10 Minneapolis, MN

<sup>5</sup> (<http://www.menshealth.com/health/best-cities-men-2011/page/2>)

<sup>6</sup> ([http://www.eiu.com/site\\_info.asp?info\\_name=The\\_Global\\_Liveability\\_Report&rf=0](http://www.eiu.com/site_info.asp?info_name=The_Global_Liveability_Report&rf=0))



**Gallup-Healthways Well Being Index<sup>7</sup>***Large Cities*

- 1 Washington, DC
- 2 Austin, TX
- 3 San Jose, CA
- 4 Seattle, WA
- 5 San Francisco, CA
- 6 Minneapolis, MN
- 7 Boston, MA
- 8 San Diego, CA
- 9 Raleigh, NC
- 10 Hartford, CT

*Mid-Sized Cities*

- 1 Boulder, CO
- 2 Lincoln, NE
- 3 Fort Collins, CO
- 4 Provo, UT
- 5 Honolulu, HI
- 6 Madison, WI
- 7 Cedar Rapids, IA
- 8 Gainesville, FL
- 9 Bridgeport, CT
- 10 Peoria, IL

*Small Cities*

- 1 Burlington, VT
- 2 Olympia, WA
- 3 Bellingham, WA
- 4 Bremerton, WA
- 5 Topeka, KS
- 6 Barnstable Town, MA
- 7 Charlottesville, VA
- 8 Kennewick, WA
- 9 Medford, OR
- 10 Amarillo, TX

<sup>7</sup> (<http://www.well-beingindex.com/default.asp>)

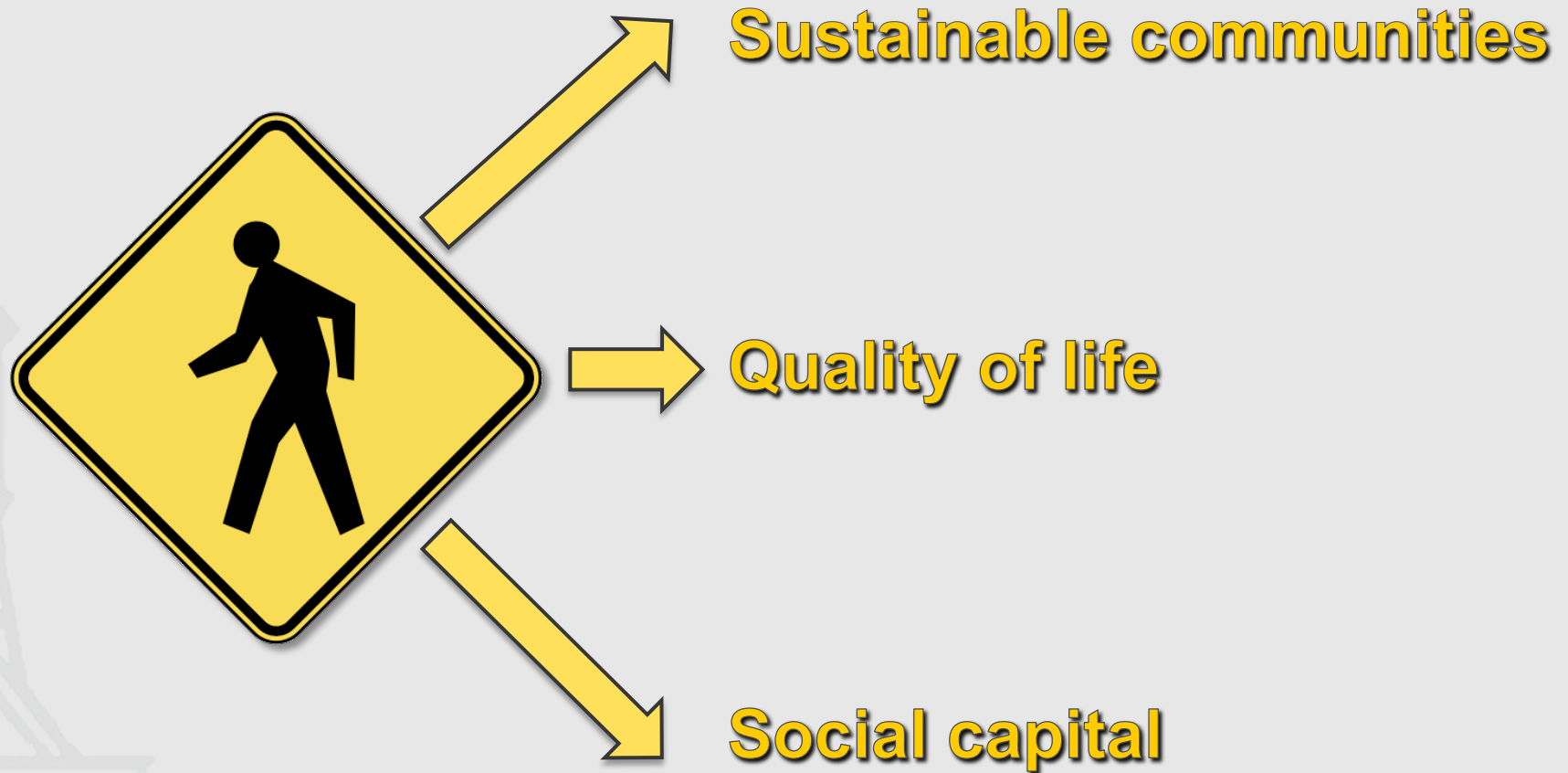


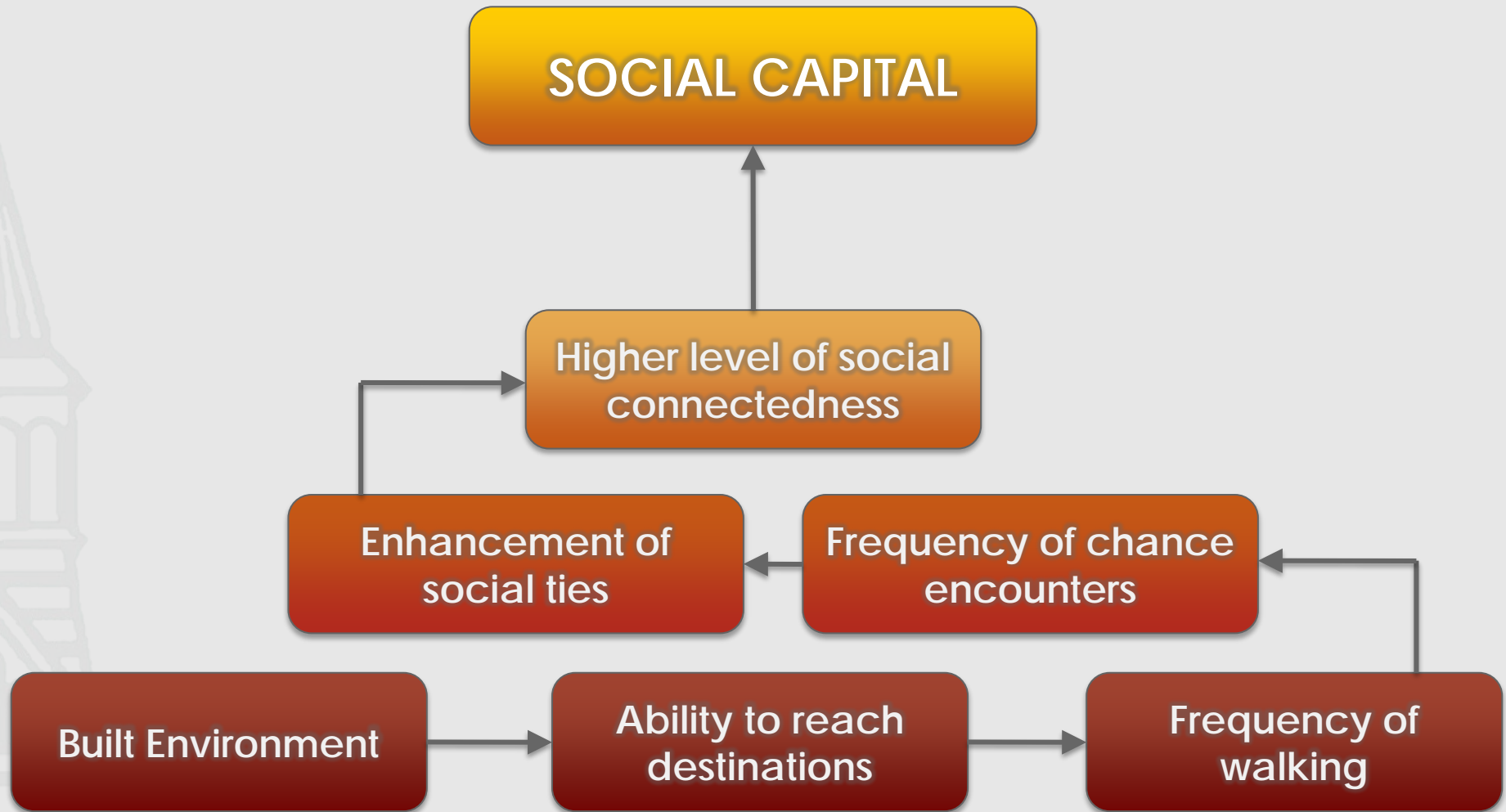
# What is livable?

vs.

# What do people think is livable?



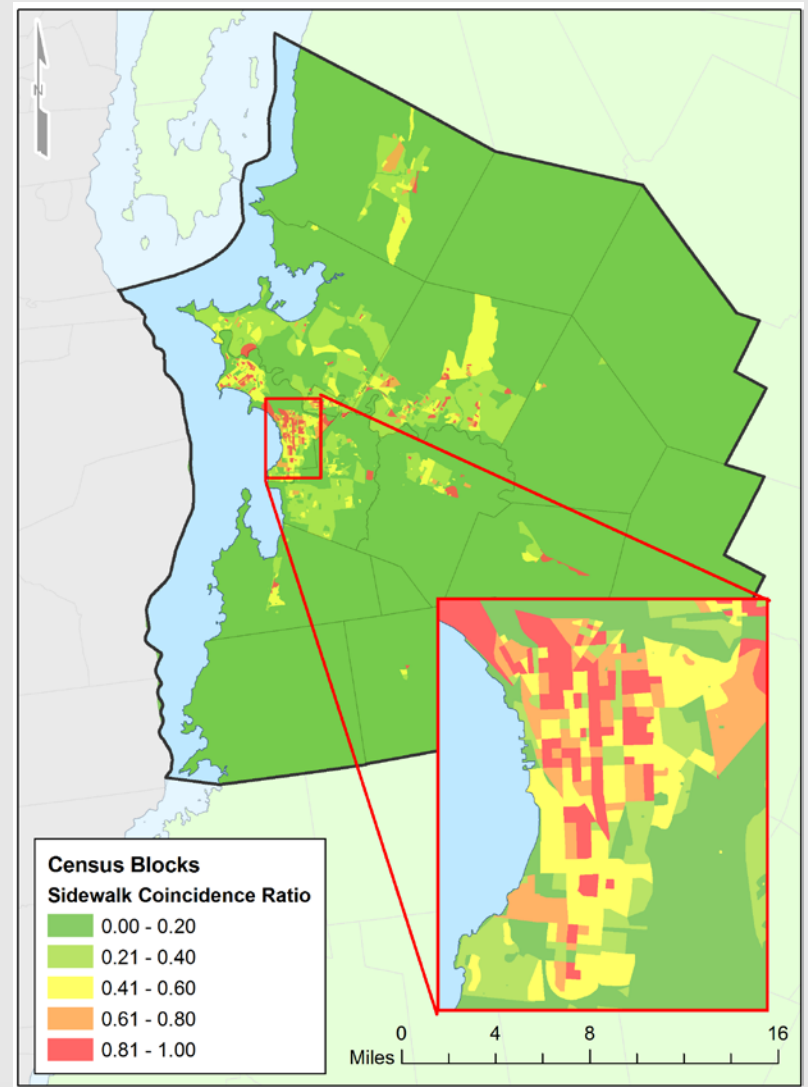
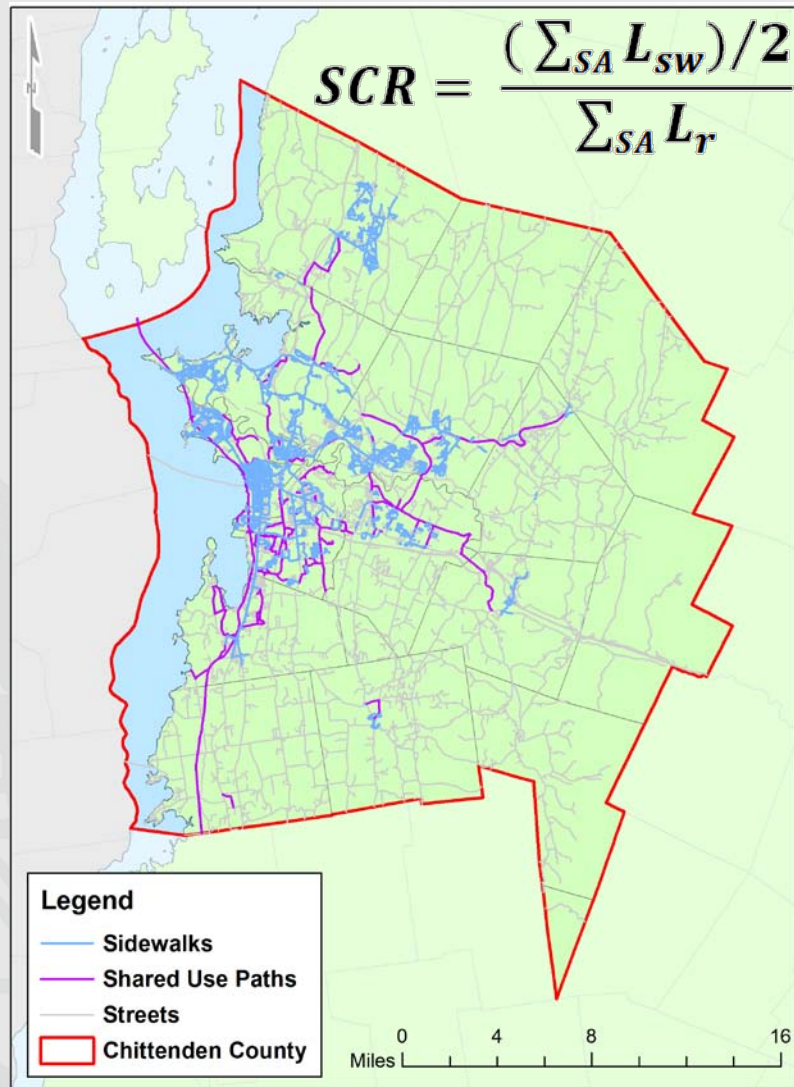






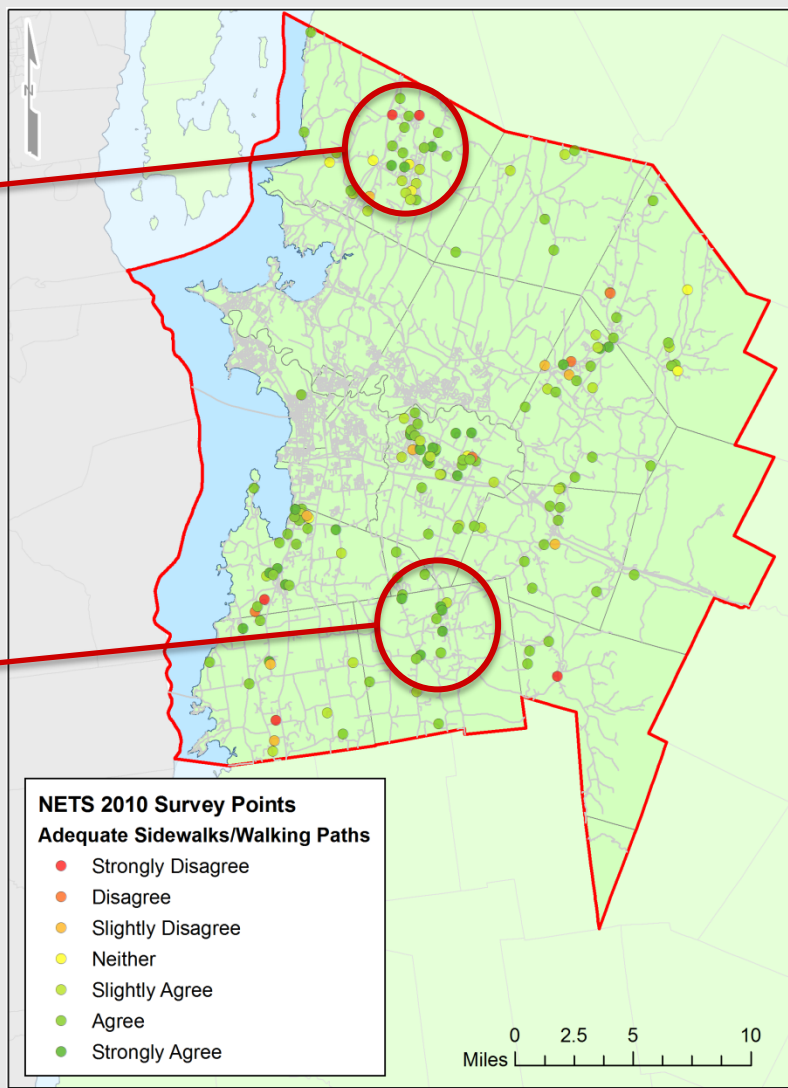
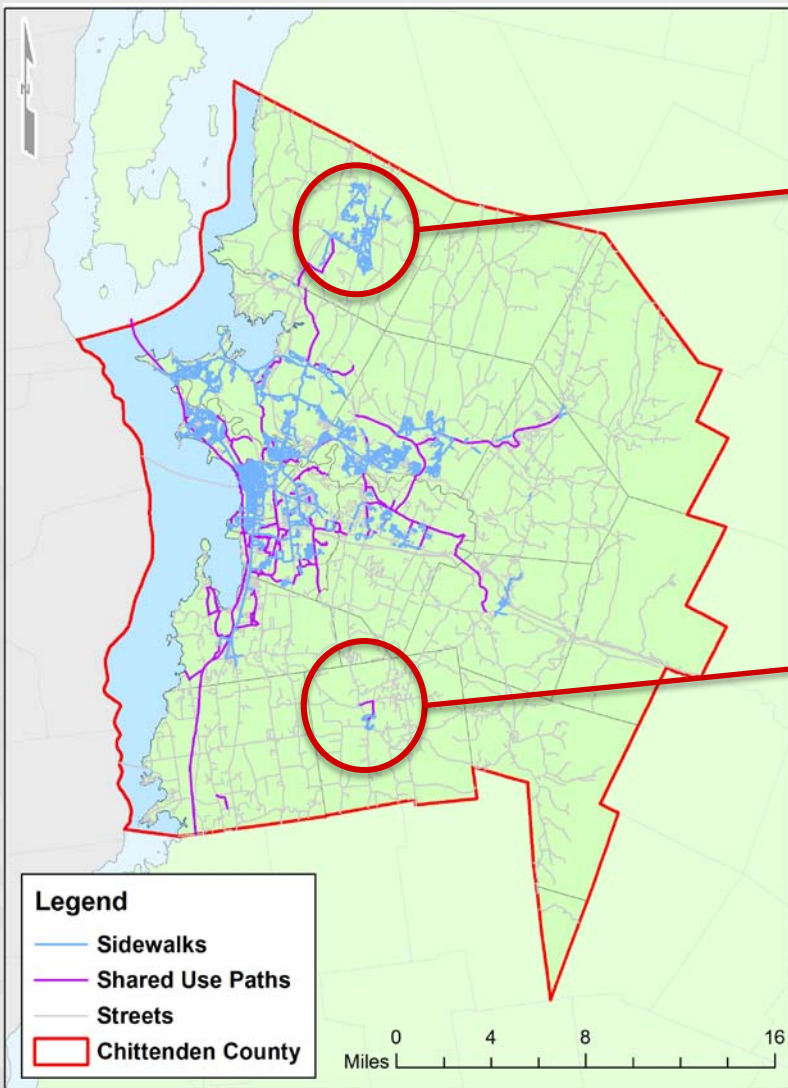
# USING DISAGGREGATE DATA

## Sidewalks

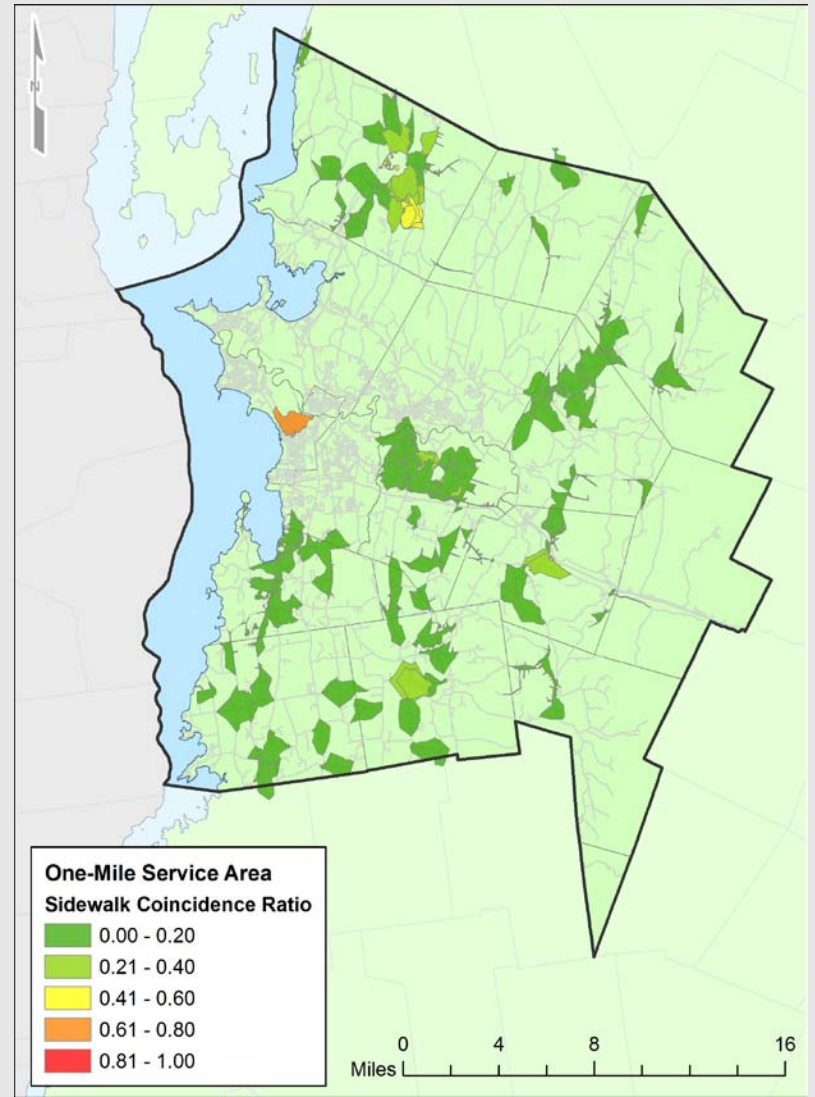
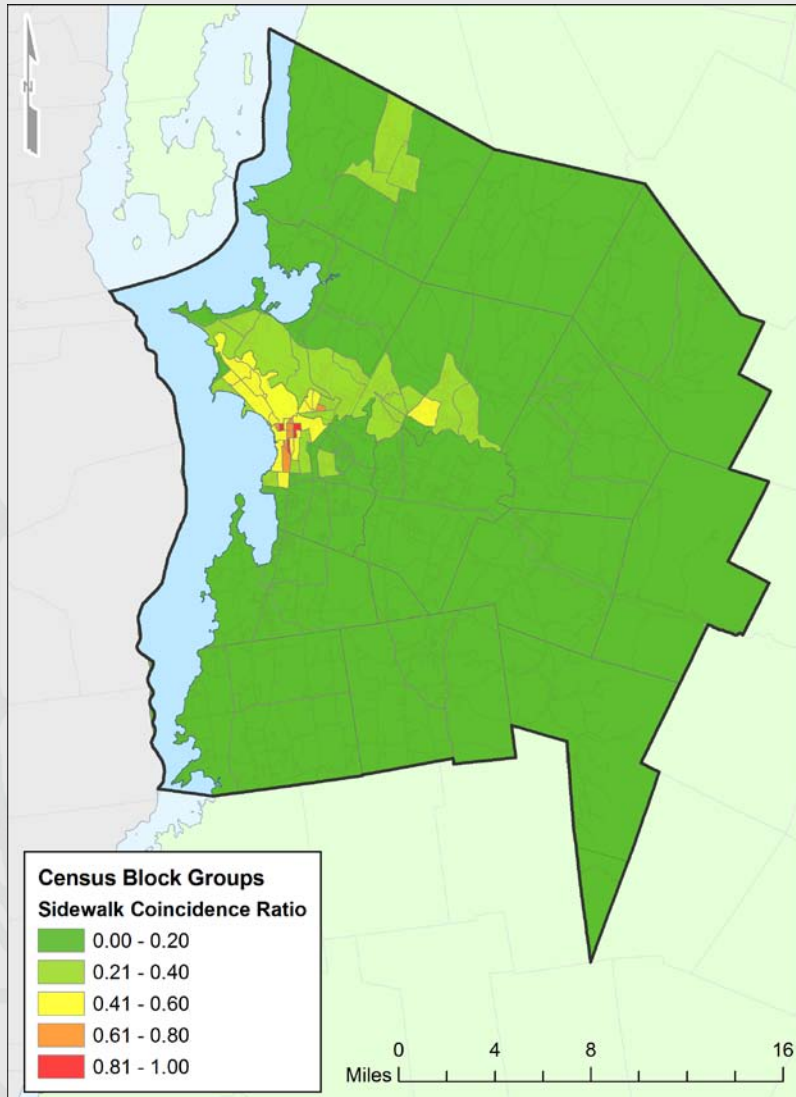




## Sidewalks

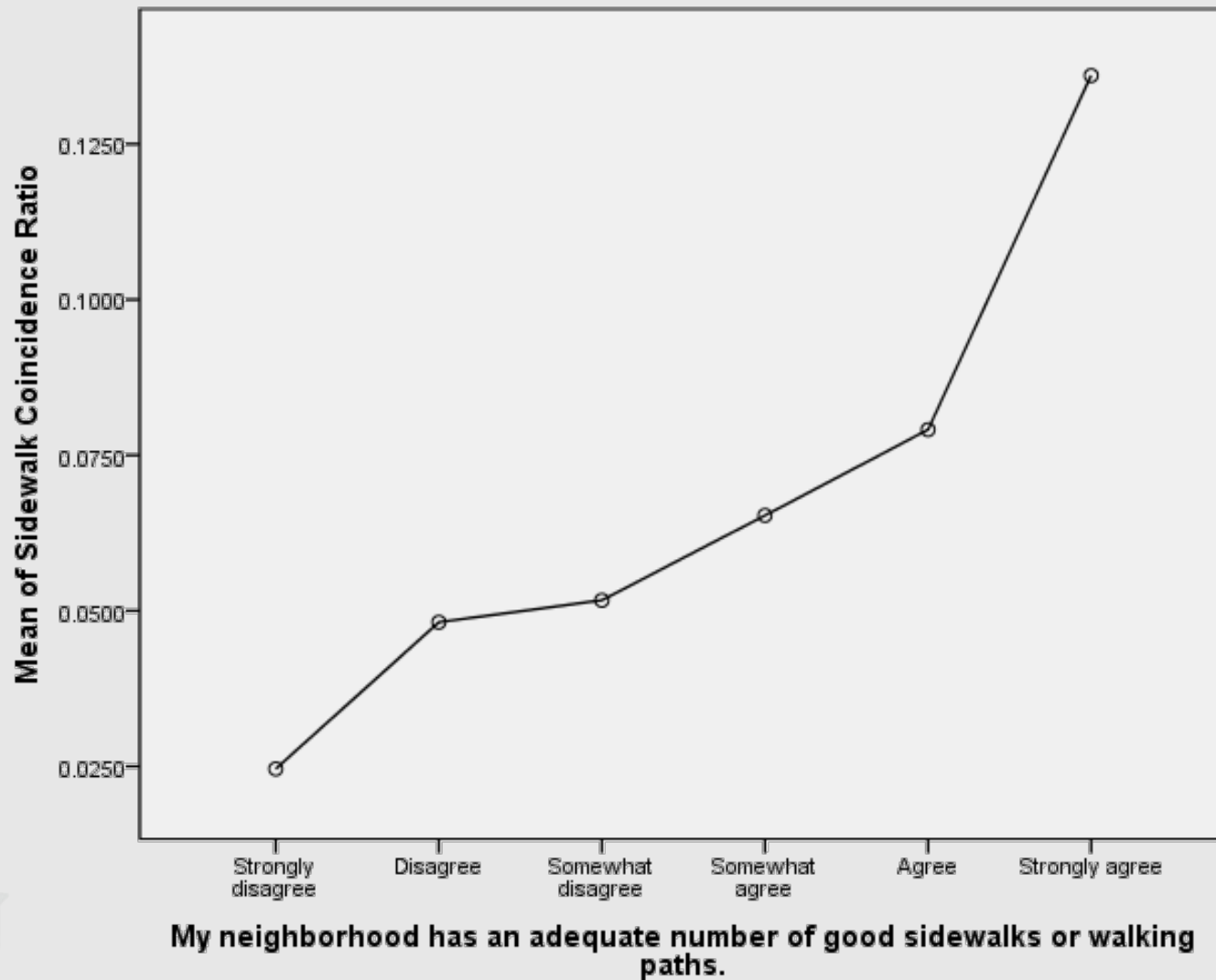


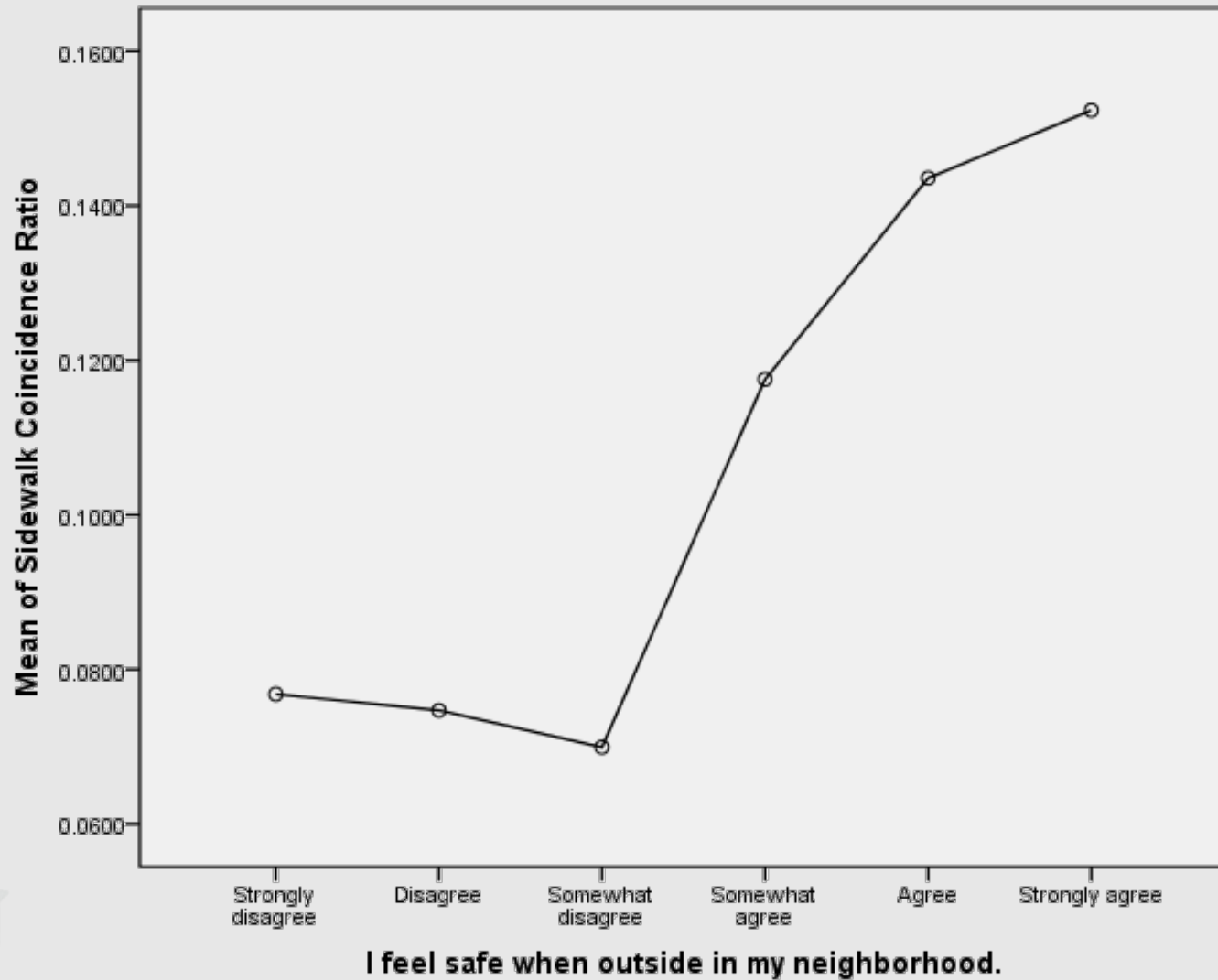
## Sidewalks



# USING DISAGGREGATE DATA

More sidewalks = better perception of sidewalk infrastructure

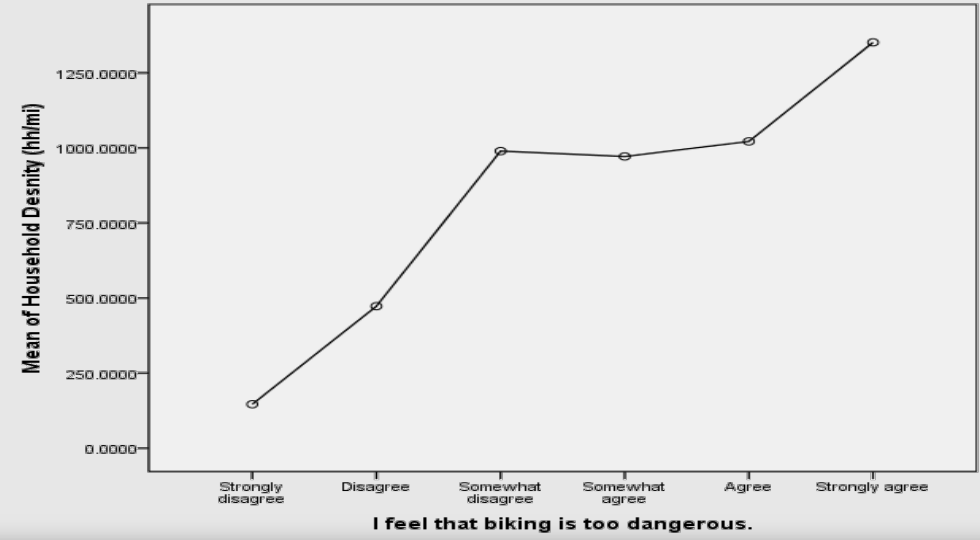
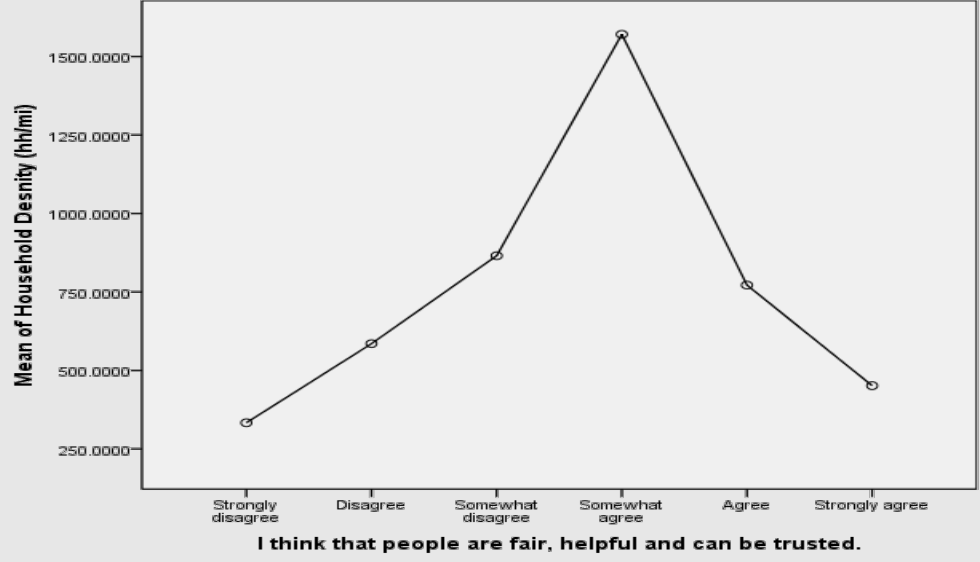
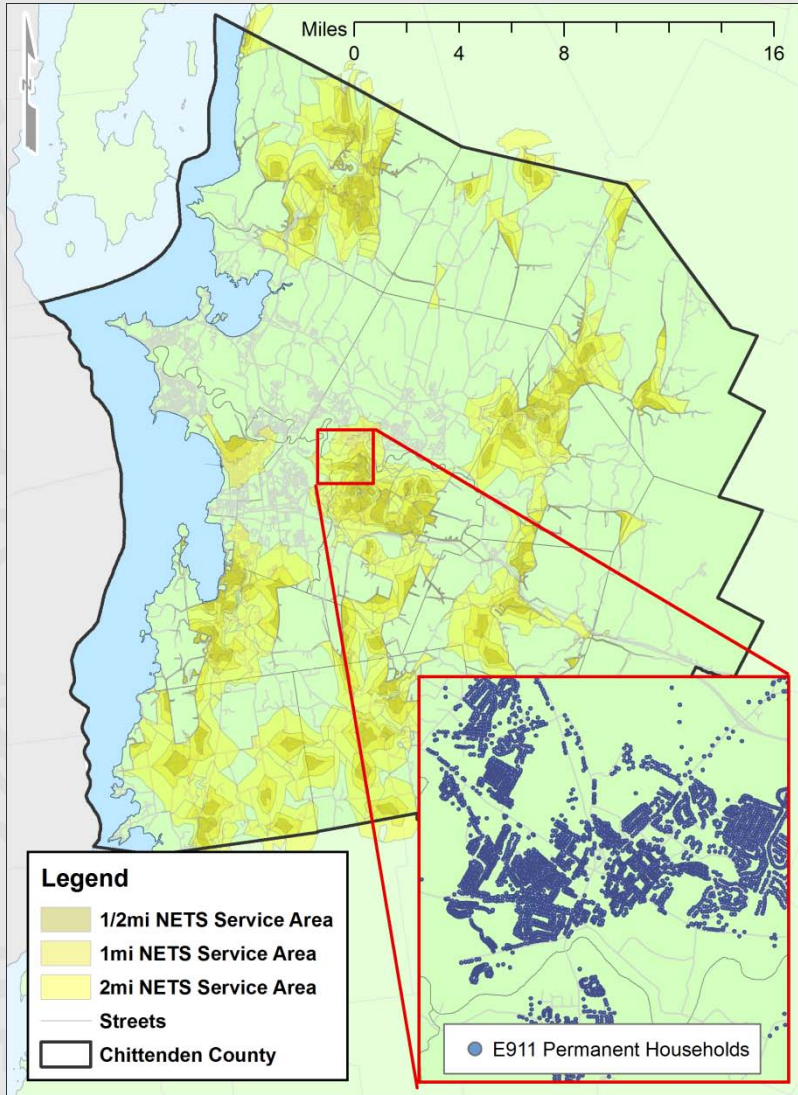






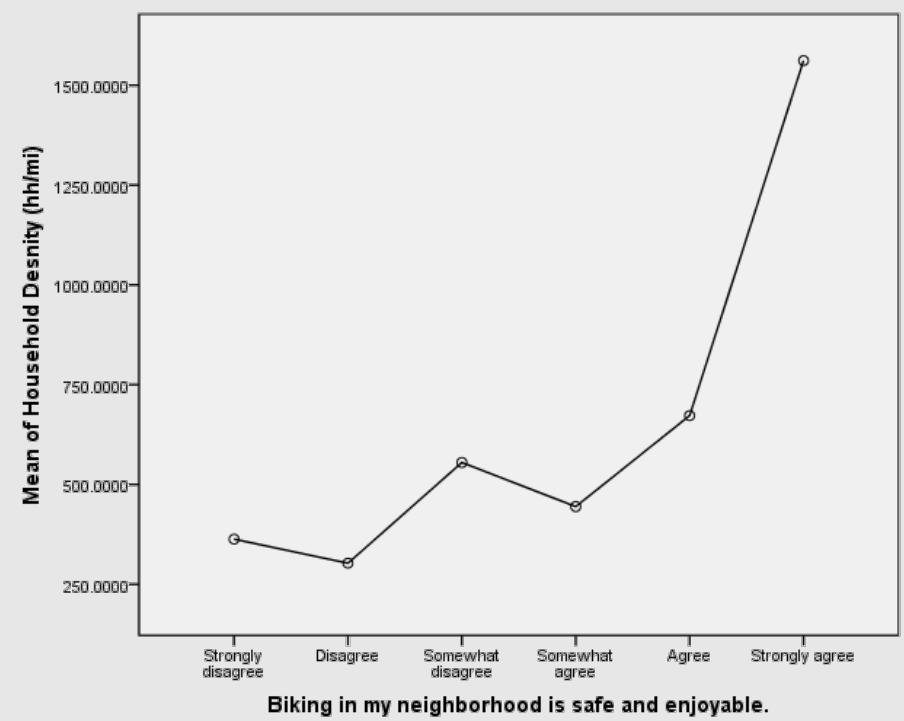
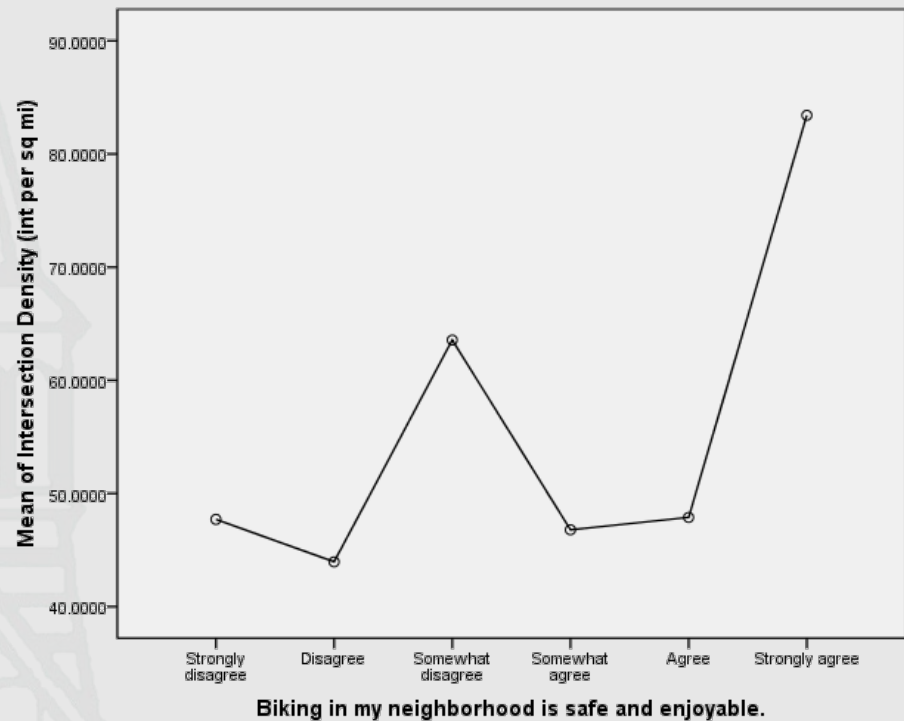
# USING DISAGGREGATE DATA

## Households



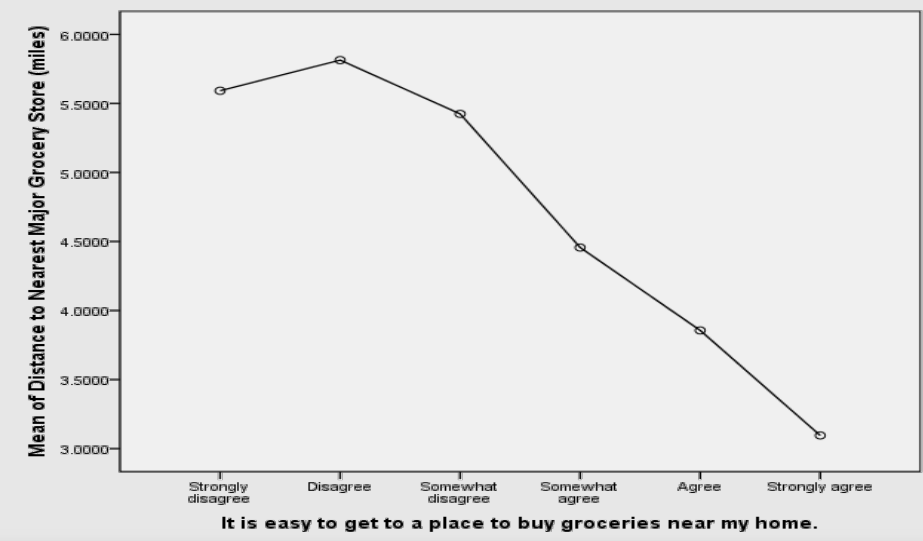
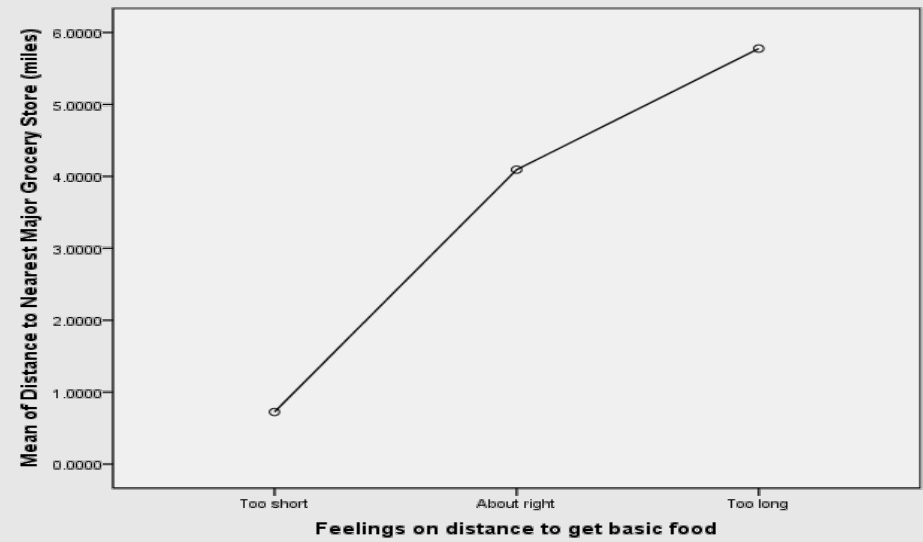
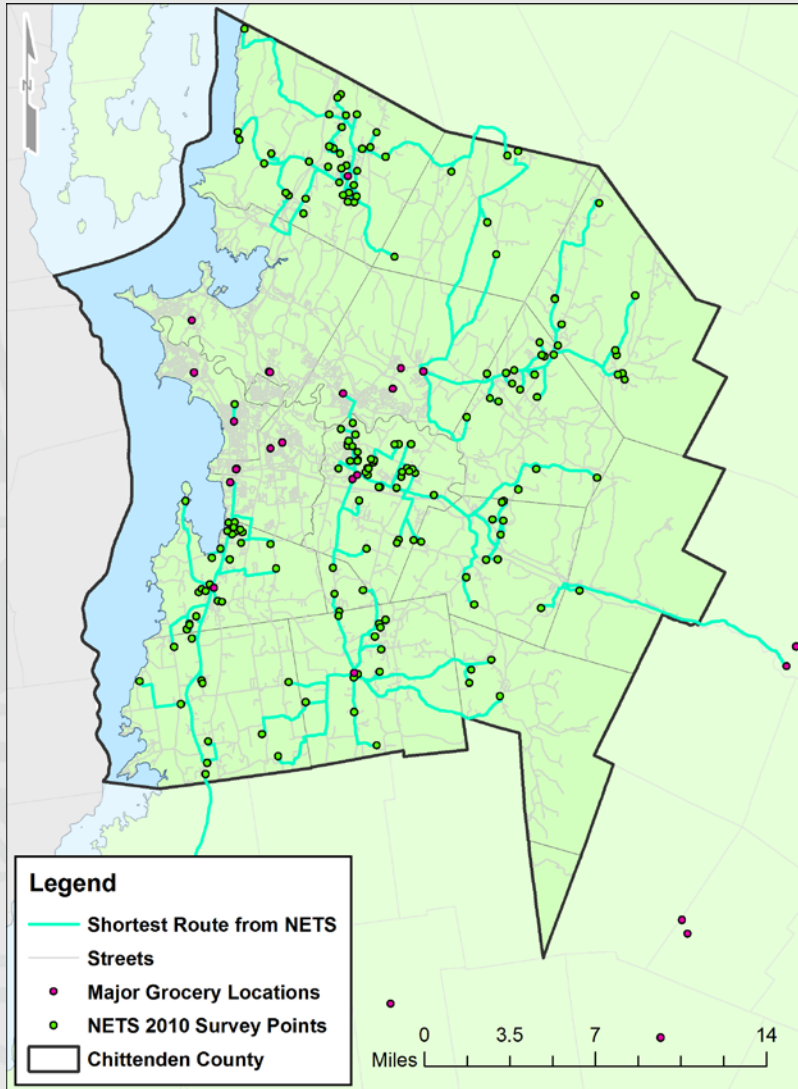
# USING DISAGGREGATE DATA

## Households



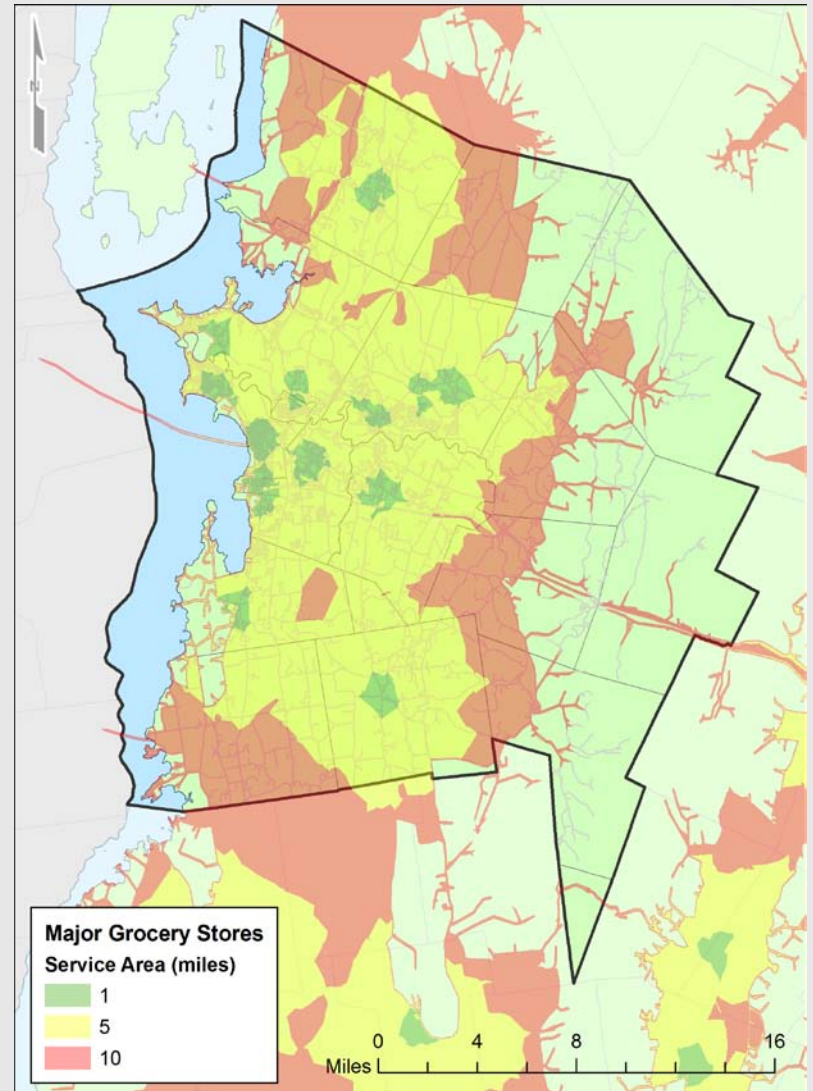
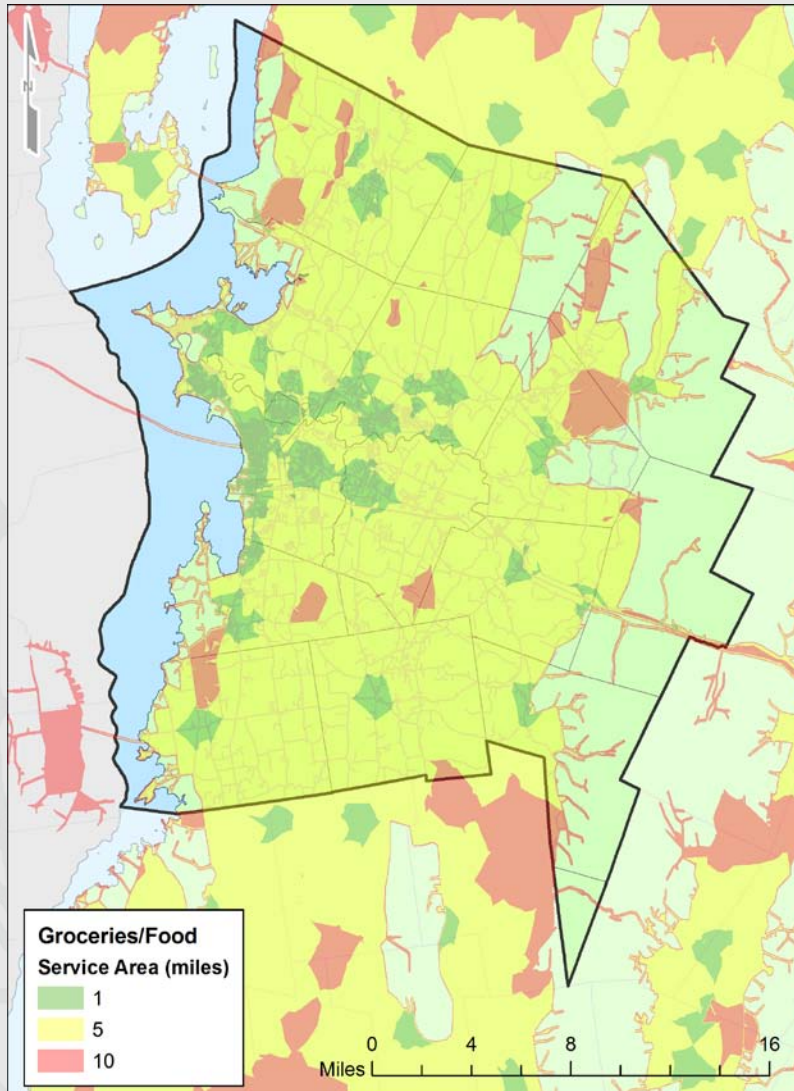
# USING DISAGGREGATE DATA

## Groceries





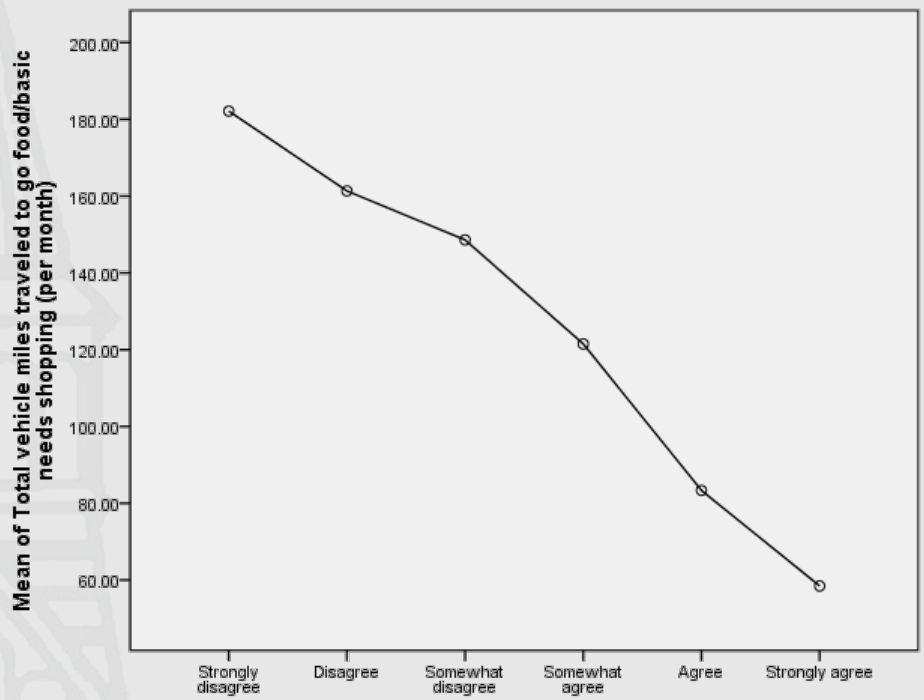
## Groceries



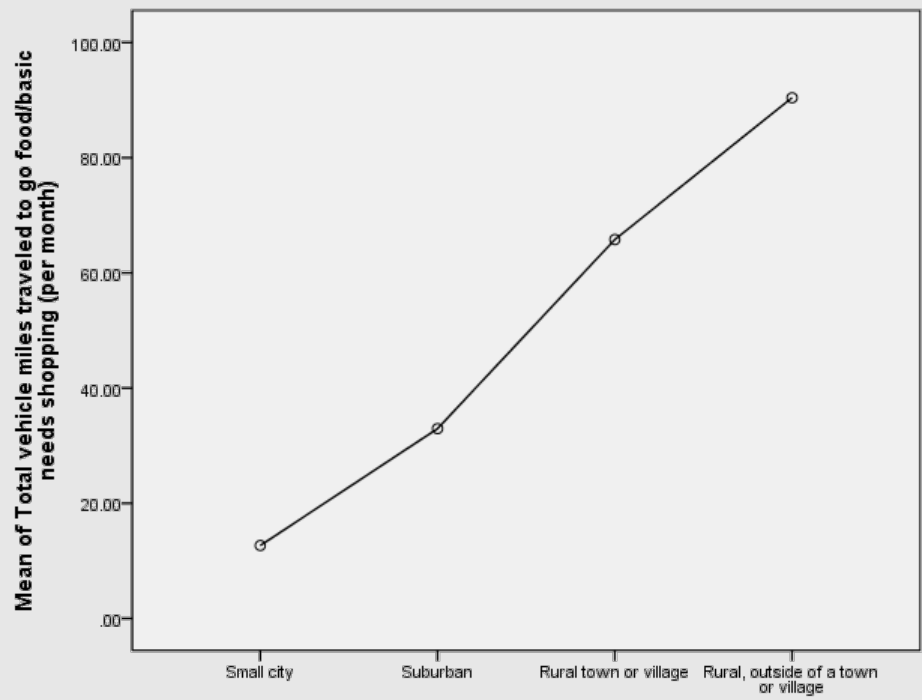


# USING DISAGGREGATE DATA

## Groceries



It is easy to get to a place to buy groceries near my home.

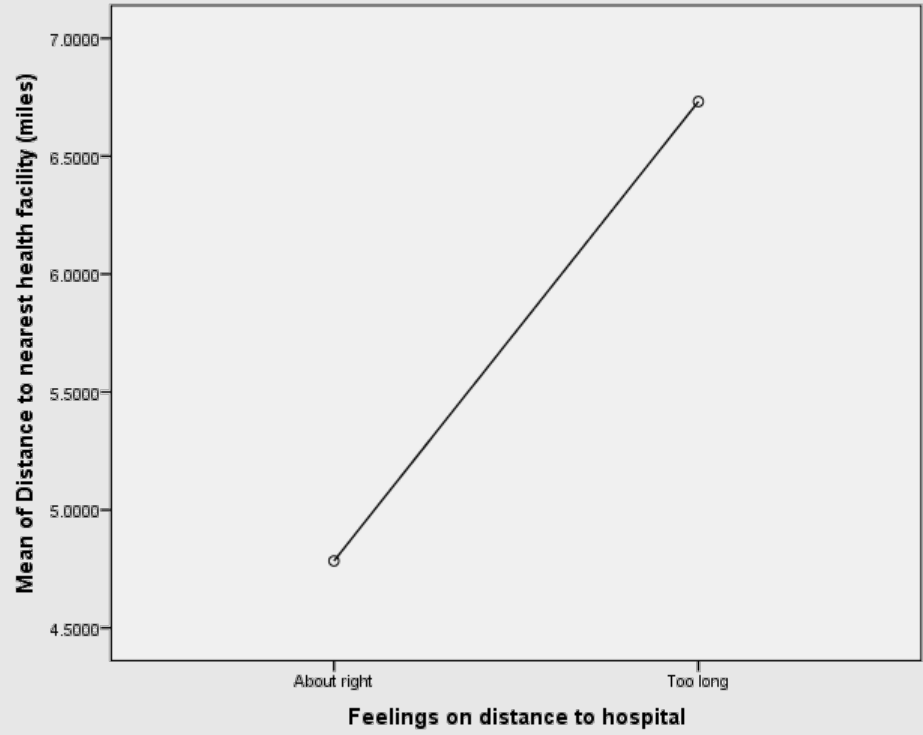
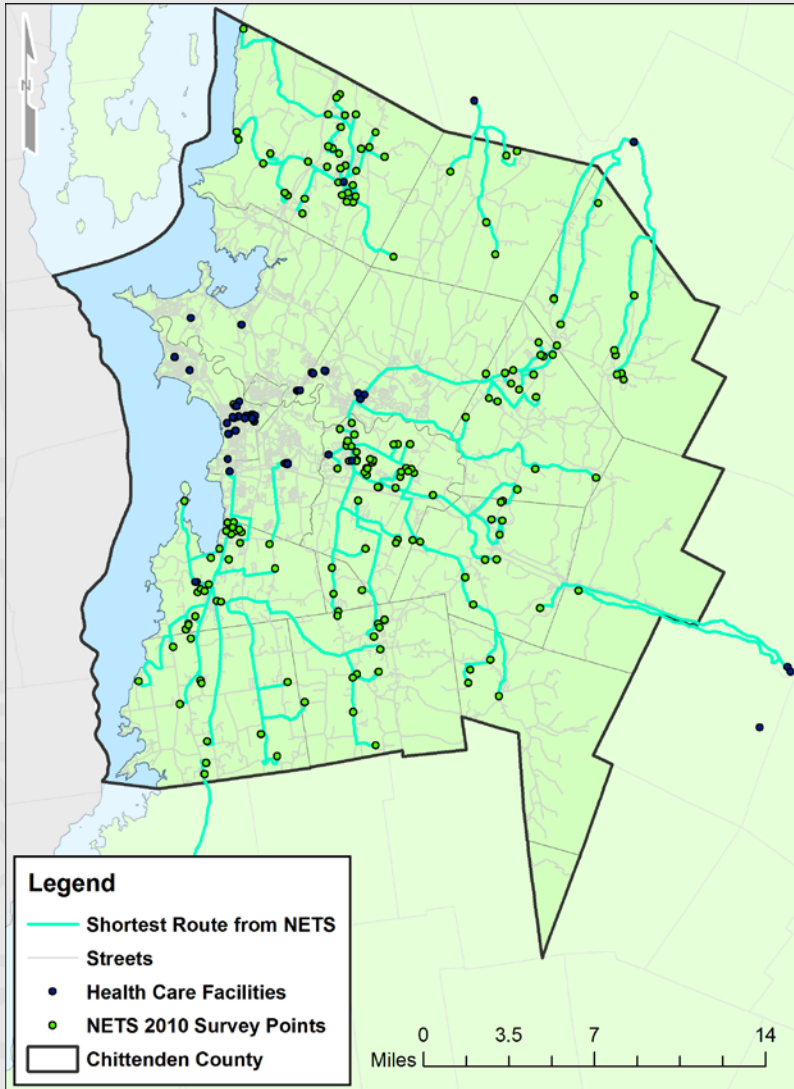


Locale type



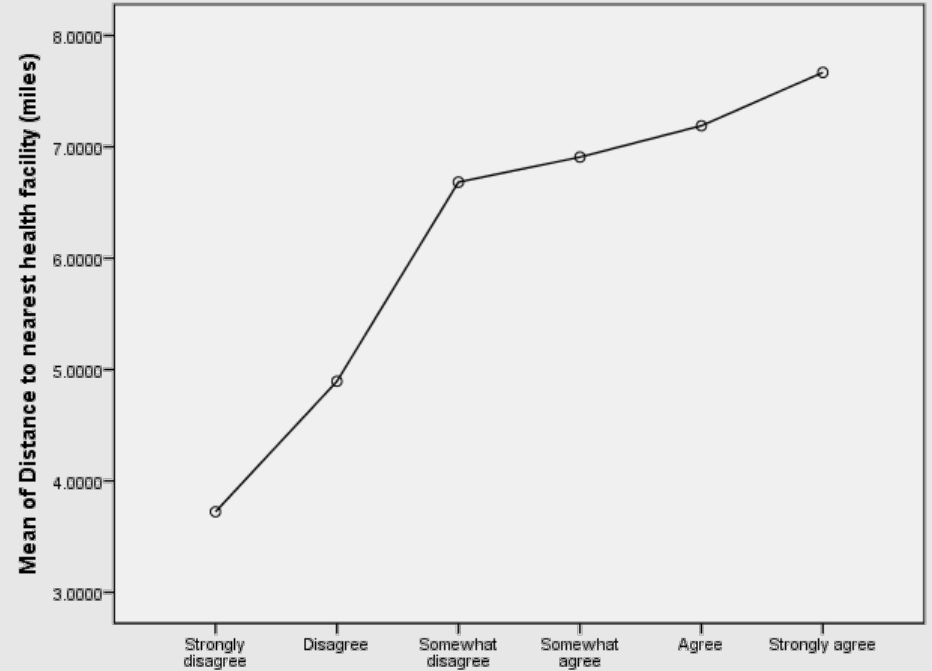
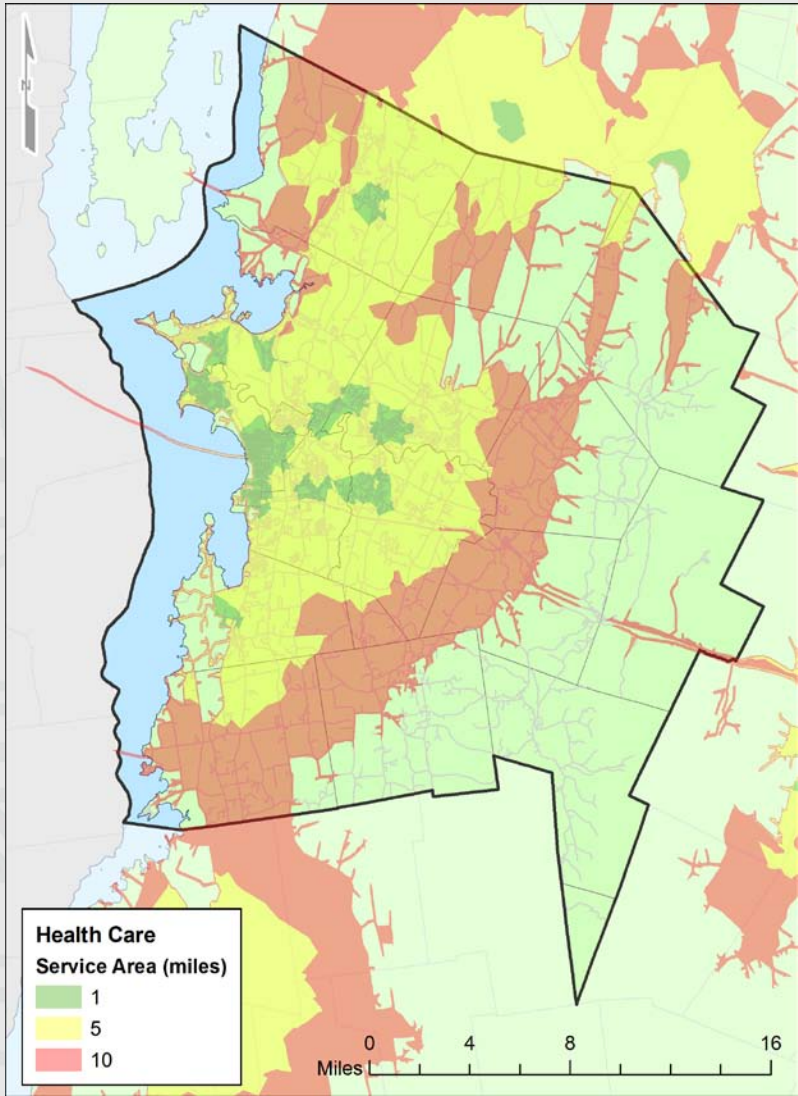
# USING DISAGGREGATE DATA

## Health Care



# USING DISAGGREGATE DATA

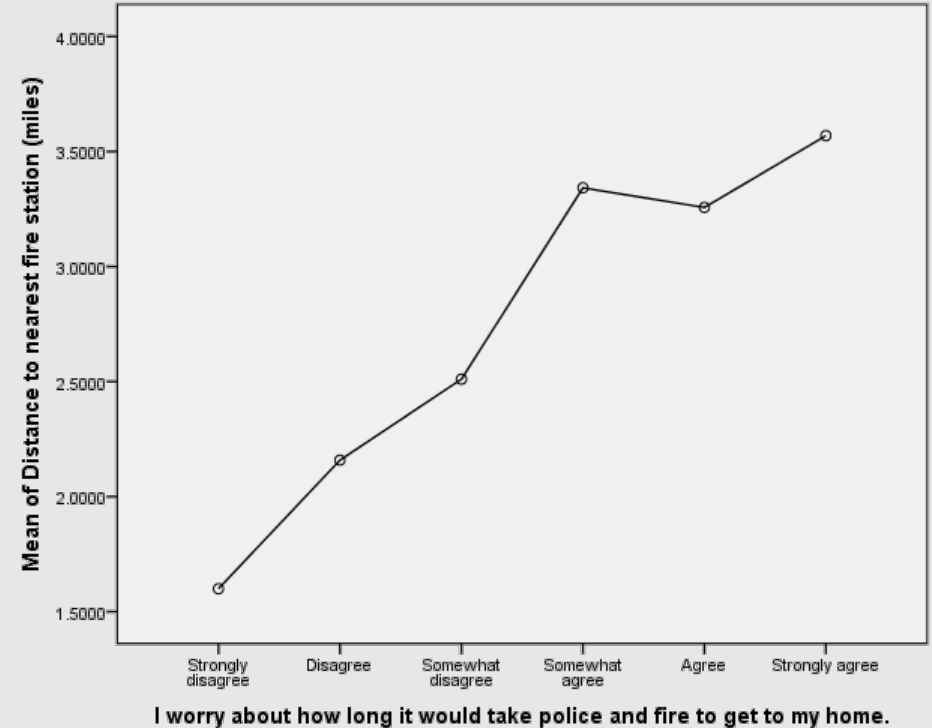
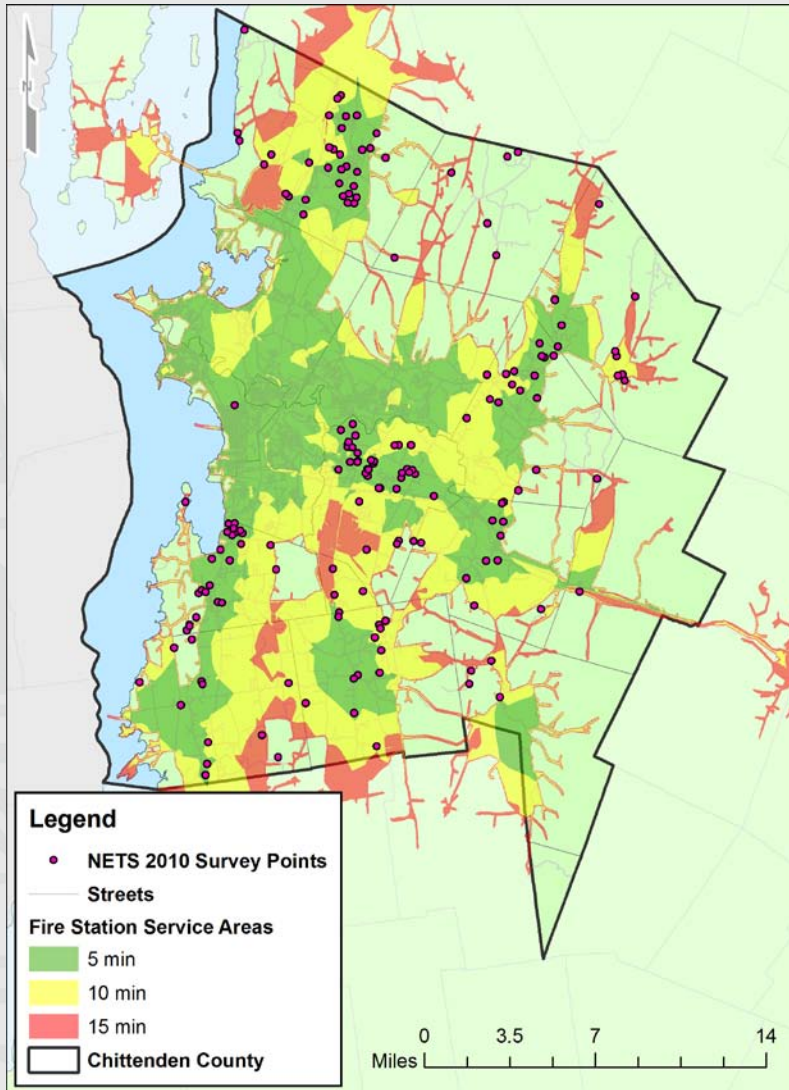
## Health Care



I worry about how long it would take to get from my home to the hospital in an emergency.

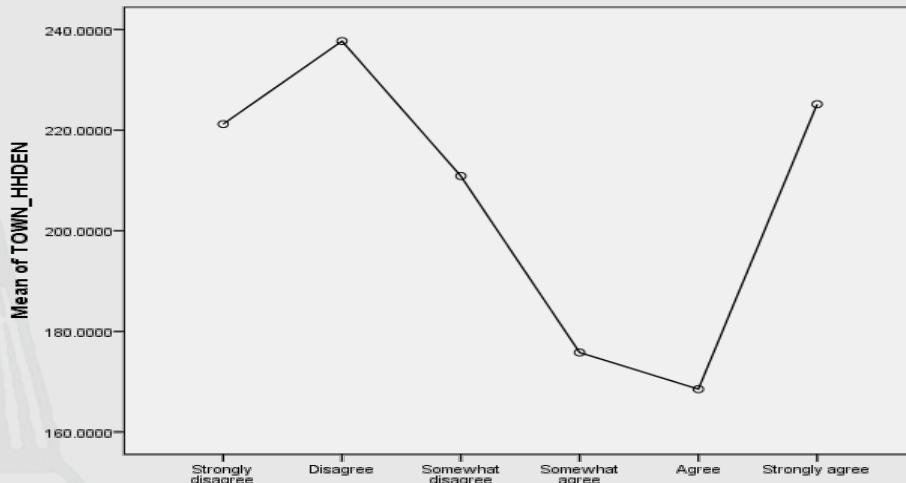


## Emergency Response

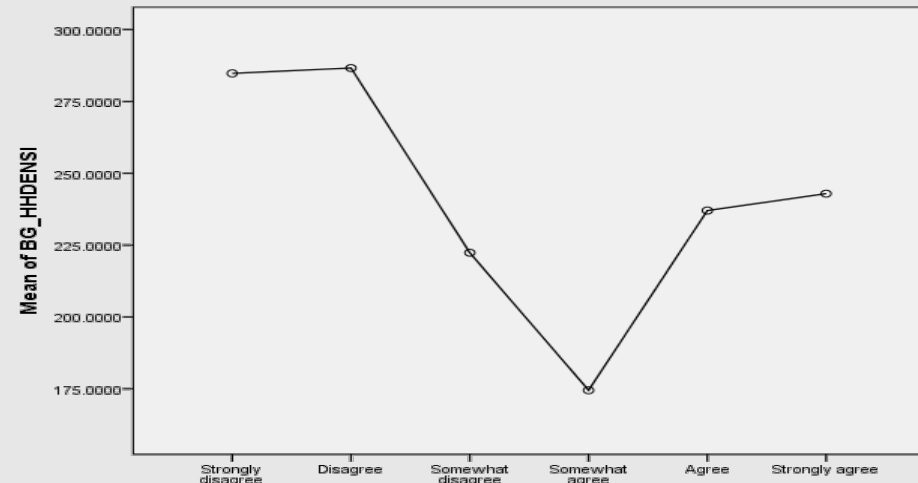


# USING DISAGGREGATE DATA

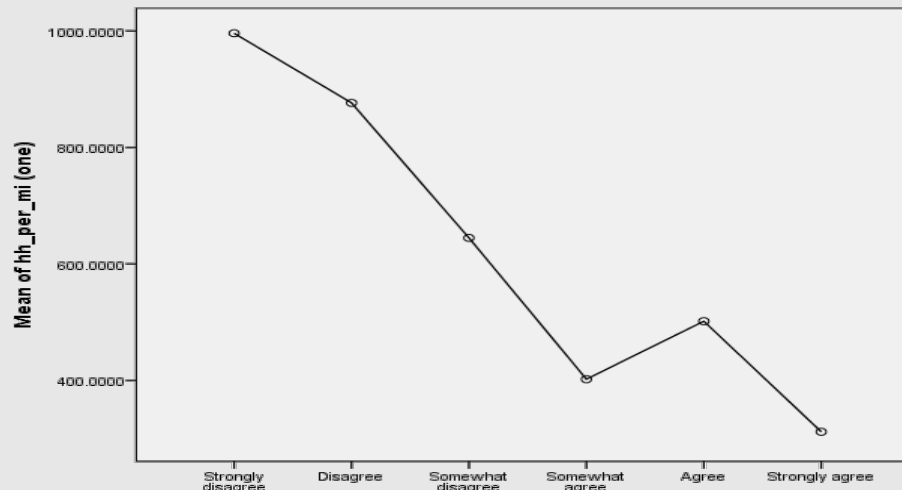
## Emergency Response



I worry about how long it would take police and fire to get to my home.



I worry about how long it would take police and fire to get to my home.

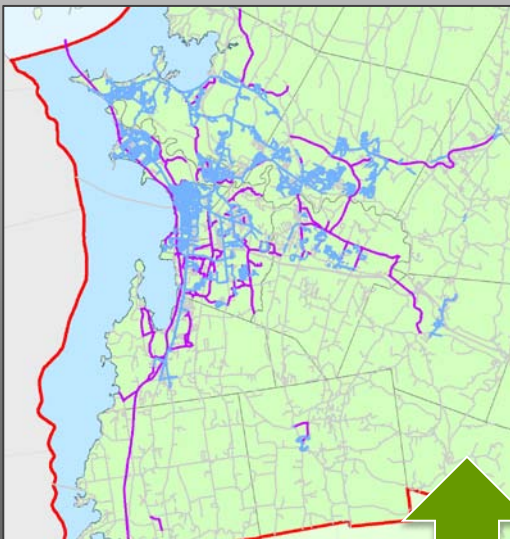


I worry about how long it would take police and fire to get to my home.

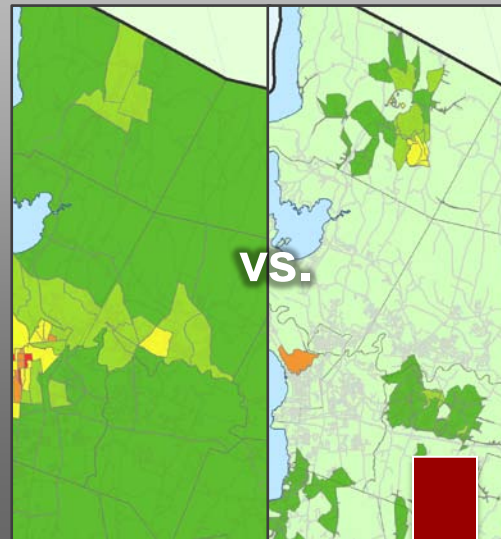




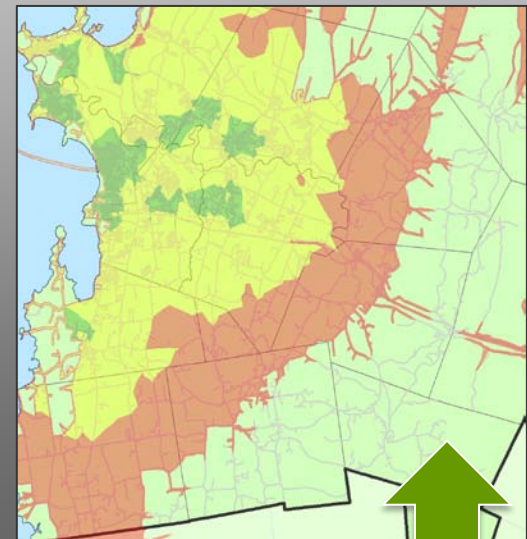
Higher presence of  
sidewalks  
(walkability, safety, biking)



Representation on  
aggregate levels



Proximity to emergency  
response induces greater  
level of comfort



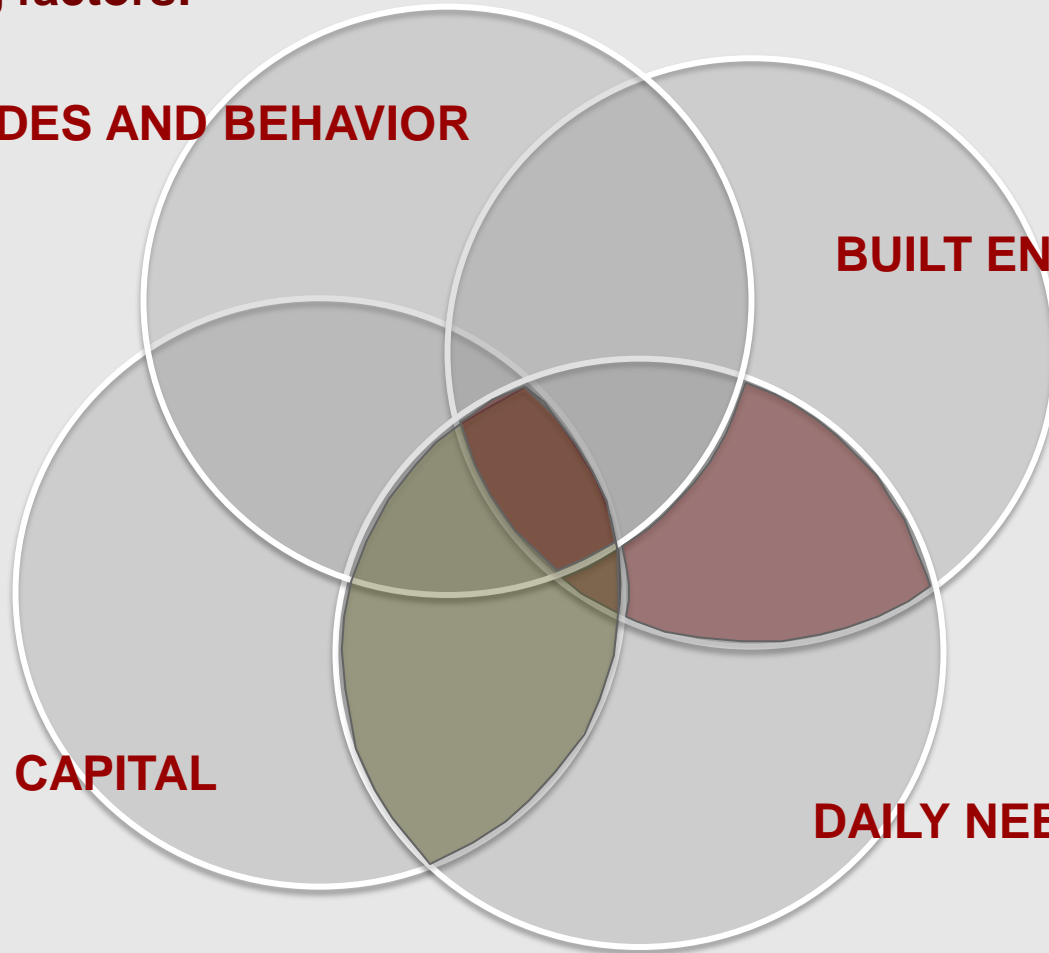
Explore spatial relationships between livability and the following factors:

**PUBLIC ATTITUDES AND BEHAVIOR**

**BUILT ENVIRONMENT**

**SOCIAL CAPITAL**

**DAILY NEEDS**



Social  
Component

Geographic Scale  
based Normalization

“Big Picture” Policy  
Take-Away

1. Consideration of spatial AND temporal variations in livability
2. Importance of finer resolution data to identify isolation
3. Data needs and deficiencies in our knowledge of the social component
4. Importance of compatibility across data for spatial integration





Collaboration with:  
James Sullivan, P.E.  
Research Engineer, UVM TRC

Data and Information from:  
Vermont Center for Geographic Information  
New England Transportation Institute (NETS)  
US Department of Transportation (NHTS)  
Vermont Agency of Transportation, Chittenden County MPO,  
and UVM Transportation Research Center (NHTS Add-On)

